

# Yavapai County Regional Mobility Management Implementation Plan

---

## **Appendix A**

### **REGIONAL PROFILE**

---

# Appendix A

## Table of Contents

---

1. Study Area.....	4
2. Governmental Structure.....	4
Central Yavapai Metropolitan Planning Organization (CYMPO).....	4
Verde Valley Transportation Planning Organization (VVTPO) .....	6
3. Population Characteristics .....	6
Overall Population .....	6
Demographic Characteristics .....	8
4. Activity Centers.....	10
5. Employment and Commuting .....	16
Employment .....	16
Commuting Patterns .....	19
6. Existing Providers .....	22
General Public Transportation .....	22
Provider Summary.....	36
Exhibit 1 of Appendix A: Surveys.....	40
Exhibit 2 of Appendix A: Vehicle Roster.....	53

---

## List of Tables

---

TABLE A-2: POPULATION CHARACTERISTICS .....	8
TABLE A-3: POPULATION BY AGE .....	10
TABLE A-4: ACTIVITY CENTERS IN THE STUDY AREA .....	15
TABLE A-5: YEAR 2015 EMPLOYMENT .....	17
TABLE A-6: YEAR 2015 EMPLOYMENT BY SECTOR .....	18
TABLE A-7: MEANS OF TRANSPORTATION TO WORK .....	19
TABLE A-8: YEAR 2015 EMPLOYMENT AND LABOR FORCE .....	20
TABLE A-9: GENERAL PUBLIC TRANSPORTATION PROVIDERS.....	23
TABLE A-9: HUMAN SERVICE TRANSPORTATION PROVIDERS IN CYMPO & VERDE VALLEY .....	31
TABLE A-10: SPECIALIZED TRANSPORTATION PROVIDERS .....	38

---

## List of Figures

---

FIGURE A-1: STUDY AREA WITH URBANIZED AREA AND PLANNING AREA BOUNDARIES .....	5
FIGURE A-2: SHARE OF POPULATION BY REGION .....	7
FIGURE A-3: PROJECTIONS OF THE GROWTH IN ELDERLY POPULATION .....	11
FIGURE A-4: CYMPO ACTIVITY CENTERS.....	13
FIGURE A-5: VERDE VALLEY ACTIVITY CENTERS.....	14
FIGURE A-6: YEAR 2015 COMMUTER IN/OUT FLOW.....	21
FIGURE A-7: CAT LOCAL SERVICES .....	23
FIGURE A-8: LYNX ROUTE MAP .....	25
FIGURE A-9: YRT GREEN AND YELLOW ROUTES .....	27
FIGURE A-10: YRT RED AND BLUE ROUTES.....	28
FIGURE A-11: CITIBUS ROUTE (APPROXIMATE).....	29
FIGURE A-12: YAVAPAI-APACHE TRANSIT ROUTE MAP .....	30
FIGURE A-13: HUMAN SERVICE TRANSPORTATION IN CYMPO & VERDE VALLEY REGIONS .....	32

## **1. STUDY AREA**

Located in north central Arizona, Yavapai County covers approximately 8,128 square miles. Yavapai County has a diverse physical topography with elevation ranging from 1,900 feet to nearly 8,000 feet and terrain consisting of grassland, rock formation, desert streams, and mountain valleys. Over 3,000 square miles of the land coverage in Yavapai County is designated as forest; the National Forest Service manages the Prescott, Kaibab, Coconino, and Tonto National Forests located in the central, northern, eastern and southern portions of Yavapai County respectively.

Yavapai County is located roughly 48 miles north of Phoenix and 29 miles south of Flagstaff. Major highways include Interstate 17, US Highway 93, and State Routes 69, 89, 89A, 169, and 260.

The Mingus Mountain Range and the eastern portion of Prescott National Forest divide the area into two distinct regions referred to as Central Yavapai and the Verde Valley. Yavapai County is large and also contains communities in the northern and southern parts of the county that do not identify with either of these two regions.

The population in Yavapai County was 211,033 according to the US Census. This was a 26% increase over the prior 10 years. The State Demographer's Office, a branch of the Arizona Department of Administration (ADOA), develops yearly population estimates and estimated the 2015 population for Yavapai County to be 220,774. 4.6% higher than in 2010.

Growth is a reflection of the regional and local economy; pre-recession, Arizona had a thriving and robust economy. While Arizona's economy slowed in 2008, the total population in Yavapai County continued to increase, growing roughly 4,350 residents per year from 2000 to 2010 while the State as a whole slowed considerably. The State's economy is gradually recovering and Yavapai County continues to grow, but the Yavapai County rate remains significantly lower than trends observed from the previous decade.

## **2. GOVERNMENTAL STRUCTURE**

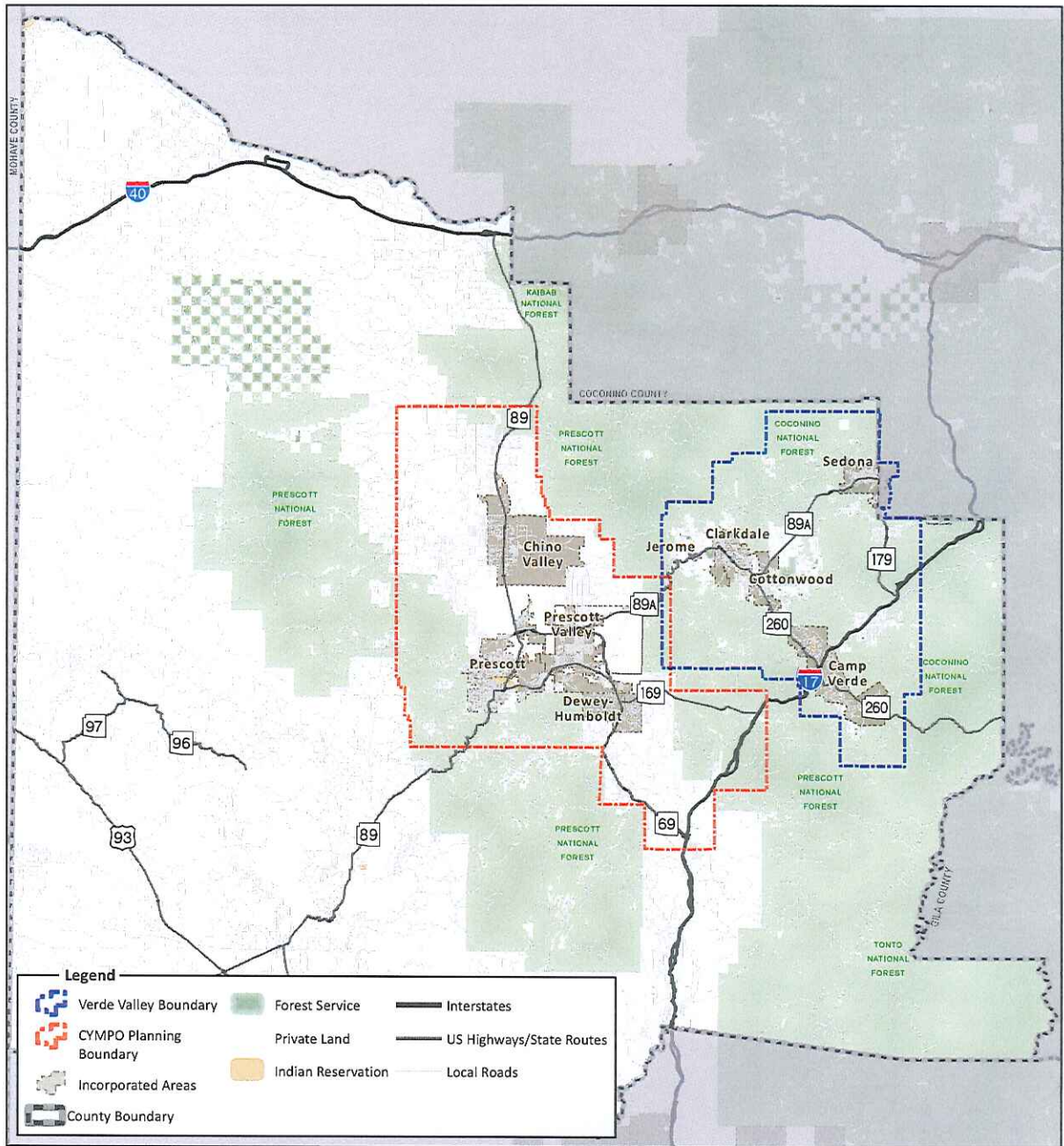
Yavapai County Government is presided over by five Supervisors. The County seat is in the City of Prescott. There are nine incorporated cities, several unincorporated communities, and one urbanized area, the Prescott Valley/Prescott urbanized area. The urbanized area boundaries are shown in Figure A-1.

### **CENTRAL YAVAPAI METROPOLITAN PLANNING ORGANIZATION (CYMPO)**

The CYMPO planning area encompasses 431.5 square miles and is also shown in Figure A-1. It includes the Town of Prescott Valley-City of Prescott urbanized area and a planning area that also encompasses Chino Valley, Dewey-Humboldt, and portions of unincorporated Yavapai County and the Yavapai-Apache Nation. The CYMPO area has two municipalities each with over 40,000 in population and some of the highest growth rates in Yavapai County.



Figure A-1: Study Area with Urbanized Area and Planning Area Boundaries



## NORTHERN ARIZONA COUNCIL OF GOVERNMENTS (NACOG)

NACOG is the council of governments for four counties in northern Arizona, including Yavapai County. NACOG provides a range of services, including transportation planning for providing federal aid in rural areas, economic development, and serves as the Area Agency on Aging and a wide range of human service and employment programs within their region. NACOG is responsible for transportation planning in rural Yavapai County, including the Verde Valley region.

## VERDE VALLEY TRANSPORTATION PLANNING ORGANIZATION (VTPO)

The Verde Valley covers 673 square miles in the northeastern portion of Yavapai County is not as heavily populated as the CYMPO region, with several municipalities of 4,000 to 12,000 people. A county-sponsored committee, the Verde Valley Transportation Planning Organization meets to coordinate and allow for peer exchange in the Verde region. The VTPO includes representatives of the Towns of Camp Verde, Clarkdale, and Jerome; the cities of Cottonwood and Sedona, the Yavapai-Apache Nation, ADOT, NACOG, Yavapai County, and advocates.

# 3. POPULATION CHARACTERISTICS

## OVERALL POPULATION

Table A-1 identifies the population by municipality and for unincorporated Yavapai County between 2010 and 2015. With a total population of 40,999 in 2015, Prescott Valley has edged out Prescott as the most populated municipality in Yavapai County. Since 2010, Prescott Valley has increased on average 435 new residents per year while Prescott averaged 134 new residents per year. Although Chino Valley has increased on average 116 new residents per year, the Town's population in 2015 was 11,396.

Cottonwood and Camp Verde have similar populations to Chino Valley each around 11,000 residents. In 2010, Sedona had a total of 10,036 residents, of which 7,189 were located within the Yavapai County portion of the city boundary.

**Table A-1: Population Growth Trends**

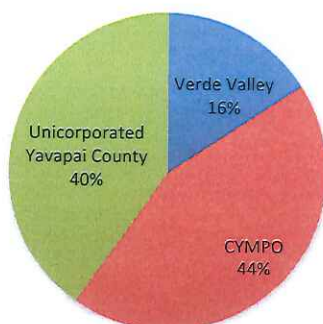
	Total Population			
	Year 2010	Year 2015	Increase from 2010 to 2015	% Increase from 2010 to 2015
Town of Camp Verde	10,873	11,191	318	2.9%
Town of Chino Valley	10,817	11,396	579	5.3%
Town of Clarkdale	4,097	4,251	154	3.8%
City of Cottonwood	11,265	11,649	384	3.4%
Town of Dewey-Humboldt	3,894	4,023	129	3.3%
Town of Jerome	444	442	-2	-0.5%
City of Prescott	39,843	40,513	670	1.7%
Town of Prescott Valley	38,822	40,998	2,176	5.6%
City of Sedona	7,189	7,435	246	3.4%
Unincorporated County	83,789	88,876	5,087	6.1%
<b>Yavapai County Total</b>	<b>211,033</b>	<b>220,774</b>	<b>9,741</b>	<b>4.6%</b>

Note: Totals for the City of Sedona reflect the portion located in Yavapai County

Source: 2010 U.S. Census, and Arizona Department of Administration, Office of Employment and Population Statistics

Figure A-2 illustrates how the population is divided between the CYMPO Planning Area, the Verde Valley Planning Area, and the rest of the County. For transportation services, the residents of the two areas are served by different organizations, and have different types of services. Of the residents in unincorporated Yavapai County, a portion live in the areas around the municipalities in Central Yavapai County, a portion in the Verde Valley, and a portion in diverse communities throughout the County. The residents who live in and around communities such as Seligman, and Ash Fork to the north; Peeples Valley, Congress or Yarnell to the southwest; or Mayer and Black Canyon City to the south have different travel needs. While their numbers are small, their mobility needs are important to consider. It can be challenging to serve residents of those communities, particularly those that are aging or who have disabilities.

**Figure A-2: Share of Population by Region**





## DEMOGRAPHIC CHARACTERISTICS

Demographic data for an area provides information of potential transit users. Specific demographic data such as age, disability status, income level, and auto ownership are used to develop a profile of the transit dependent population in the County; this is essential to the efforts of the transit development throughout the County.

**Table A-2** summarizes the 2010 age, disability status, income level, and auto ownership for the nine incorporated municipalities, Yavapai County, and Arizona.

**Table A-2: Population Characteristics**

	Total 2010 Population	Population							Households	
		Percent Minority	Percent Age 10 - 19	Percent Age 65- 74	Percent Age 75 and Over	Percent Disabled* (Age 16 to 64)	Percent Disabled* (Age 65 and older)	Percent Below Poverty^	Year 2010 Total	Percent Zero Vehicle Households^
Town of Camp Verde	10,873	26.1%	12.7%	11.6%	8.1%	28.7%	16.1%	27.1%	4,088	3.7%
Town of Chino Valley	10,817	18.1%	12.5%	12.5%	7.7%	22.2%	13.4%	17.4%	4,396	2.6%
Town of Clarkdale	4,097	21.7%	10.3%	13.8%	11.9%	17.5%	15.8%	9.4%	1,806	0.7%
City of Cottonwood	11,265	27.3%	11.1%	12.6%	13.3%	26.3%	19.2%	24.0%	5,179	9.6%
Town of Dewey-Humboldt	3,894	14.5%	12.4%	13.4%	7.7%	25.3%	20.9%	12.7%	1,589	5.7%
Town of Jerome	444	9.7%	5.2%	11.3%	5.4%	16.4%	3.6%	25.0%	253	7.3%
City of Prescott	39,843	12.9%	10.0%	15.9%	14.9%	17.7%	13.9%	15.3%	18,611	8.9%
Town of Prescott Valley	38,822	21.2%	12.9%	10.7%	8.4%	22.0%	12.2%	15.5%	15,364	4.7%
City of Sedona	7,189	19.8%	8.2%	15.2%	12.0%	14.8%	11.7%	8.8%	3,482	3.6%
Unincorporated County	83,789	16.6%	10.9%	14.5%	9.2%	22.1%	13.3%	15.4%	36,135	3.4%
<b>Yavapai County Total</b>	<b>211,033</b>	<b>18.0%</b>	<b>11.2%</b>	<b>13.7%</b>	<b>10.4%</b>	<b>21.3%</b>	<b>14.0%</b>	<b>16.1%</b>	<b>90,903</b>	<b>5.1%</b>
<b>State of Arizona Total</b>	<b>6,392,017</b>	<b>42.2%</b>	<b>14.2%</b>	<b>7.8%</b>	<b>6.0%</b>	<b>19.9%</b>	<b>9.7%</b>	<b>18.2%</b>	<b>2,380,990</b>	<b>6.9%</b>

Note: Totals for the City of Sedona reflect only the portion located in Yavapai County

Source: 2010 U.S. Census, \*2000 U.S. Census, and ^2010-2014 American Community Survey

Demographic analyses have relied on decennial census data for information about transit dependent populations; however, beginning with the 2010 Census, altered data gathering techniques eliminated the collection of income, disability status, and auto ownership. As a supplement to the 2010 Census, the American Community Survey (ACS) samples approximately 1% of households across the country annually to determine social and economic trends. While Yavapai County population increased during the 5-year timeframe, the relatively slow rate of growth means that the 2010 Census data is still relevant for all municipalities.

Yavapai County has a higher elderly and disabled population and about half the level of minority population than the state as a whole. The percentage of the population over age 65 is nearly double the State average (13.7% compared to 7.8% for the State) while the population over age 75 is 10.4% compared to the State estimate of 6.0%. These figures mean that mobility options are particularly important for maintaining the quality of life in the County. For the County as a whole, the percentage of residents between ages 10-19 and below the poverty level are somewhat lower than State averages. Similarly, the number of zero-vehicle households is also somewhat lower than State averages.

The disabled populations are civilian, non-institutionalized persons who may have sensory, physical, self-care, unable to go outside the home, and/or employment impairments. This population group often has difficulty operating automobiles so public transportation can provide a lifeline for them, a way to access services or participate in the work force. The number of people with disabilities tracks closely with the number of elderly in a community, as the rate of disabilities increases as the population ages. Dewey-Humboldt, Cottonwood, and Camp Verde have relatively high percentages of individuals with disabilities who are between ages 16 and 64.

Below poverty populations are individuals living in households that live below income thresholds established by the US Census Bureau, which vary by family size and composition. Low-income households may rely on public transportation and services more than the general population; therefore, recognition of this group's concentration centers is useful. Camp Verde, Jerome, and Cottonwood have the three highest percentages of population living below the poverty level and of these only Cottonwood has transit services. In addition, these percentages are each 24% or higher and higher than the state and county's estimates of 18.1% and 16.2%, respectively.

Vehicle availability may limit a person's ability to commute to work or get to an activity center. Depending on the number of people living in each household, a certain number of vehicles may not be able to provide everyone with a means of transportation. Households in Cottonwood, Prescott, and Jerome have high levels of zero-auto households, so residents need to utilize alternative means of transportation in order to meet the needs of daily living.

Table A-3 summarizes age groups for the nine incorporated municipalities in Yavapai County. Sedona, Prescott, and Cottonwood have the highest percentages of elderly populations. Prescott Valley, Camp Verde, Chino Valley and Dewey-Humboldt have a younger population base.

**Table A-3: Population by Age**

	Total 2010 Population	Youth Population				Adult Population					
		Age 9 and Under		Age 10 - 19		Age 20 - 64		Age 65- 74		Age 75 and Over	
Town of Camp Verde	10,873	1,303	12%	1,382	13%	6,040	56%	1,265	12%	883	8%
Town of Chino Valley	10,817	1,351	12%	1,357	13%	5,925	55%	1,349	12%	835	8%
Town of Clarkdale	4,097	433	11%	424	10%	2,187	53%	566	14%	487	12%
City of Cottonwood	11,265	1,340	12%	1,248	11%	5,757	51%	1,418	13%	1,502	13%
Town of Dewey-Humboldt	3,894	392	10%	482	12%	2,199	56%	523	13%	298	8%
Town of Jerome	444	16	4%	23	5%	331	75%	50	11%	24	5%
City of Prescott	39,843	2,724	7%	3,984	10%	20,862	52%	6,340	16%	5,933	15%
Town of Prescott Valley	38,822	5,257	14%	5,015	13%	21,120	54%	4,156	11%	3,274	8%
City of Sedona	7,189	449	6%	590	8%	4,198	58%	1,091	15%	861	12%
Unincorporated County	83,789	8,118	10%	9,154	11%	46,605	56%	12,167	15%	7,745	9%
<b>Yavapai County Total</b>	<b>211,033</b>	<b>21,383</b>	<b>10%</b>	<b>23,659</b>	<b>11%</b>	<b>115,224</b>	<b>55%</b>	<b>28,925</b>	<b>14%</b>	<b>21,842</b>	<b>10%</b>

Note: Totals for the City of Sedona reflect the portion located in Yavapai County

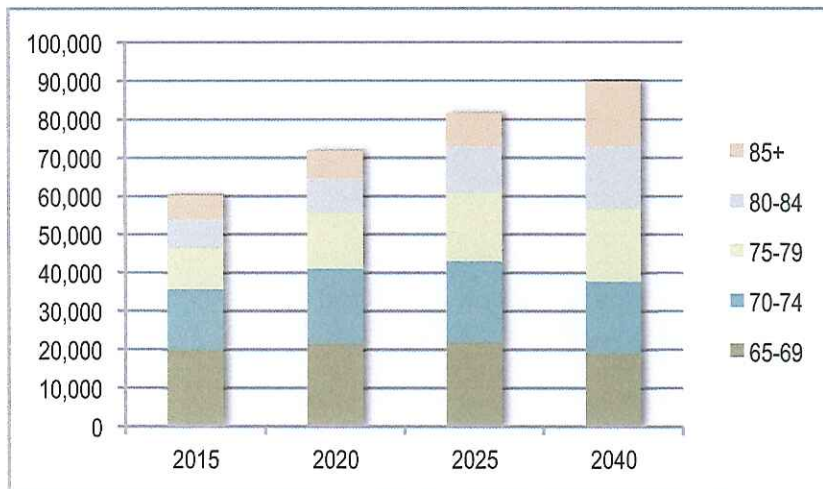
Source: 2010 U.S. Census

The County growth for individuals age 65 and above is illustrated in Figure A-3. This is based on the medium series growth projections for Yavapai County. The population as a whole is projected to increase by 39% to 302,815 by 2040, while the population above age 65 is projected to increase by 49%.

The population is divided into five-year increments, as it is the population aged 75 and above who most need specialized transportation services in order to continue living independently. Many individuals aged 65-75 continue to drive. Note if only the population aged 75 and above is considered, the increase by 2040 is 110% as this population more than doubles from 24,801 to 52,134.



**Figure A-3: Projections of the Growth in Elderly Population**



## 4. ACTIVITY CENTERS

Activity centers are typically popular destinations for shopping, medical appointments, employment, education, recreation and/or socializing. Employment centers will be discussed in more detail in the next section. **Figure A-4** displays major activity centers located in the CYMPO region. **Figure A-5** displays major activity centers located in the Verde Valley region.

Some of these destinations, like the government and medical offices, may require traveling long distances between communities. The drivers' license and public health offices are located on the north side of Prescott, and are difficult to access without an automobile. DES now has its primary office in the Town of Prescott Valley. Although Yavapai Regional Medical Center has hospitals in Prescott (west facility) and Prescott Valley (east facility) the services available at each are different. The Prescott facility has the primary heart center (including in-patient physical rehabilitation) and the MRI and endoscope services. The Prescott Valley facility has a breast care center, birthing center, and infusion center. It is common for patients to have to travel to the facility in another city to obtain needed services.

Another example is the Northern Arizona VA Health Care System (NAVAHCS) that is comprised of the Bob Stump VA Medical Center in Prescott and five outpatient clinics in Anthem, Kingman, Lake Havasu City, Flagstaff, Cottonwood, and Holbrook. This is the largest veteran health care facility in northern Arizona. Patients seeking medical assistance at the VA may need to drive across the county (or from other counties) to get to the Prescott facility for services only offered at that location. The DAV volunteer driver program assists with getting Veterans without other transportation to the VA Medical Center.

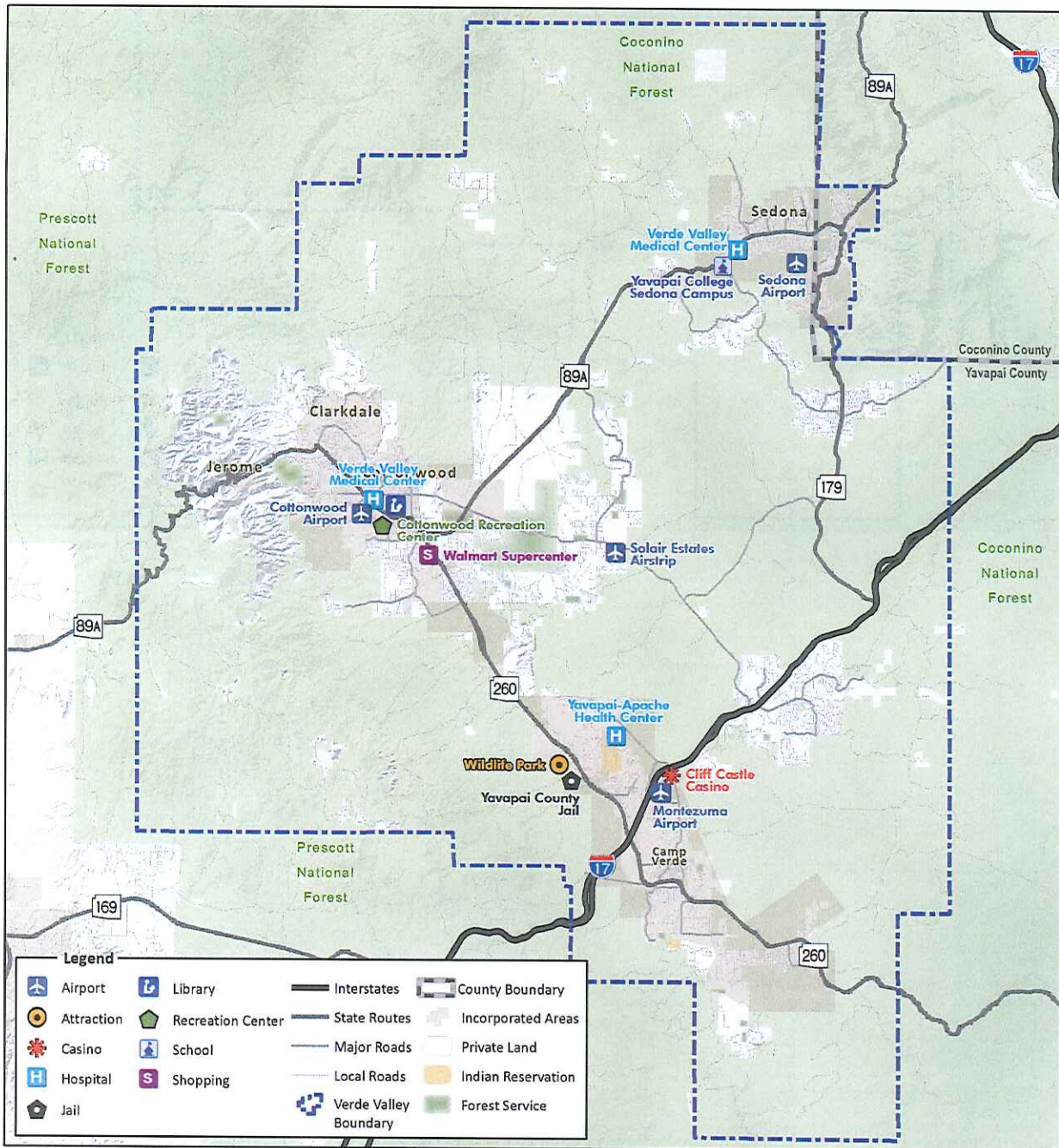
Table A-4, appearing after the maps, list of some major public activity centers found in the CYMPO and Verde Valley areas of the County. There are also many other places people routinely travel to in each community – such as commercial areas that may include a grocery store or a Wal-Mart or K-12 schools. Recreational areas can be a big draw, particularly at certain times of the year. In Sedona there are both scenic lands with high visitation and the employment that is part of the hotel industry in the area. The maps show some casinos located on the Tribal lands; these too draw both visitors and employees.

While many of the places noted on the maps and in Table A-4 are employment centers, there are also many other job locations. Employment, and where jobs are located, is discussed in the next section.





Figure A-5: Verde Valley Activity Centers





**Table A-4: Activity Centers in the Study Area**

Activity Centers		
Place	City	Activity
Camp Verde Public Library	Camp Verde	Library
Chino Valley Senior Center	Chino Valley	Senior Center
Chino Valley Public Library	Chino Valley	Library
Clarkdale Library	Clarkdale	Library
Verde Valley Medical Center	Cottonwood	Hospital
Cottonwood Recreation Center	Cottonwood	Recreation
Cottonwood Library	Cottonwood	Library
Cottonwood VA Outpatient Clinic	Cottonwood	Hospital
Dewey-Humboldt Town Library	Dewey-Humboldt	Library
Jerome Public Library	Jerome	Library
Bob Stump VA Medical Center	Prescott	Hospital
Yavapai Regional Medical Center	Prescott	Hospital
Prescott Public Library	Prescott	Library
Embry-Riddle Aeronautical University	Prescott	College
Northern Arizona University (NAU) - Yavapai Campus	Prescott	College
Yavapai County Courthouse	Prescott	Courthouse
Prescott Municipal Airport	Prescott	Airport
Yavapai Workforce Connection	Prescott	Social Services
Adult Center of Prescott	Prescott	Senior Center
Prescott Valley Public Library	Prescott Valley	Library
Yavapai College	Prescott Valley	College
Prescott Valley Civic Center	Prescott Valley	Government
Arizona Dept. of Economic Security	Prescott Valley	Social Services
CASA Senior & Community Center	Prescott Valley	Senior Center

## 5. EMPLOYMENT AND COMMUTING

### EMPLOYMENT

Utilizing the employment inventoried during recent plans and studies such as the *Verde Valley Master Transportation Plan*, *CYMPO RTP Update 2040*, and *Yavapai County General Plan*, a list of the major employers in Yavapai County was compiled and is shown below:

- |   |  |
|---|--|
| ▪ Yavapai County, city & town governments | ▪ Embry-Riddle Aeronautical University |
| ▪ Yavapai Regional Medical Center         | ▪ Wal-Mart Supercenters                |
| ▪ Northern Arizona VA Health Care System  | ▪ Verde Valley Medical Center          |
| ▪ Yavapai College                         | ▪ Cliff Castle Casino Hotel            |
|   | ▪ Enchantment Resort                   |
|   | ▪ Freeport McMoRan Inc.                |

According to the Arizona Department of Administration, Office of Employment and Population Statistics, Yavapai County had an estimated employment of 61,100 in 2015. Labor force estimates from the U.S. Census for the year 2013 were proportionately adjusted to reflect 2015 conditions.

**Table A-5** summarizes the total employment for each of the nine municipalities as well as the unincorporated portion of the County. With several of the regional employers located in Prescott, the City accounted for nearly 41.2% of the total employment in Yavapai County and attracts residents from other communities to fill these jobs. The Town of Cottonwood and City of Sedona each have fairly strong employment related to their residential base, with about one job for every two residents, although the total number of jobs is lower than the City of Prescott. Prescott Valley, with one job for each four residents, and unincorporated Yavapai County, with one job for each eight residents, each accounted for roughly 10,000 jobs or 17% of the total employment in the County.

**Table A-5: Year 2015 Employment**

	Total 2015 Population	Employment		
		Total	Primary	Non-Primary
Town of Camp Verde	11,191	3,334	3,146	188
Town of Chino Valley	11,396	2,134	2,004	130
Town of Clarkdale	4,251	532	478	54
City of Cottonwood	11,649	5,608	5,186	422
Town of Dewey-Humboldt	4,023	199	186	13
Town of Jerome	442	368	337	31
City of Prescott	40,513	25,149	23,395	1,754
Town of Prescott Valley	40,998	10,368	9,747	621
City of Sedona	7,435	3,065	2,795	270
Unincorporated County	88,876	10,343	9,687	656
<b>Yavapai County Total</b>	<b>220,774</b>	<b>61,100</b>	<b>56,961</b>	<b>4,139</b>

*Note: Totals for the City of Sedona reflect the portion located in Yavapai County*

*Sources: Arizona Department of Administration, Office of Employment; Population Statistics and Longitudinal Employer-Household Data (LEHD) 2011 Statistics from [www.onthemap.ces.census.gov](http://www.onthemap.ces.census.gov)*

**Table A-6** shows the employment by sector. Health care and social assistance, retail trade, accommodation and food services, educational services, construction, and manufacturing are primary drivers of the County's economy. Health care and social assistance accounted for 18% of Yavapai County's total employment while retail trade, educational services, and accommodation and food sectors account for 13.2%, 12.5% and 11.8% of County's employment respectively.



**Yavapai County Regional Mobility Management Implementation Plan**

**Table A-6: Year 2015 Employment by Sector**

NAICS Sectors	Camp Verde	Chino Valley	Clarkdale	Cottonwood	Dewey-Humboldt	Jerome	Prescott	Prescott Valley	Sedona	Rural County	Yavapai County Total
Agriculture, Forestry, Fishing and Hunting	15	73	0	0	0	0	8	25	1	258	380
Mining, Quarrying, and Oil and Gas Extraction	0	101	0	0	0	15	1	0	2	1,024	1,143
Utilities	32	6	7	10	0	0	83	30	36	82	286
Construction	225	298	49	234	73	13	1,204	467	234	896	3,693
Manufacturing	93	124	145	84	2	15	1,832	850	73	517	3,735
Wholesale Trade	37	75	8	108	3	4	627	1,303	54	234	2,453
Retail Trade	350	277	29	1,282	30	65	3,022	1,197	519	1,288	8,059
Transportation and Warehousing	95	65	75	41	2	0	258	390	51	143	1,120
Information	57	4	0	42	2	6	285	131	73	140	740
Finance and Insurance	32	32	0	103	0	0	421	158	58	50	854
Real Estate and Rental and Leasing	40	38	8	139	23	0	308	107	79	88	830
Professional, Scientific, and Technical Services	49	92	4	191	13	1	771	239	139	241	1,740
Management of Companies and Enterprises	1	1	0	1	0	0	59	11	10	7	90
Administrative and Support and Waste Management	114	44	25	598	3	1	610	293	73	542	2,303
Educational Services	340	359	104	432	0	0	3,294	1,529	23	1,129	7,210
Health Care and Social Assistance	474	115	2	930	39	3	7,073	1,438	314	602	10,990
Arts, Entertainment, and Recreation	572	1	0	50	0	11	457	331	83	143	1,648
Accommodation and Food Services	449	231	30	749	3	197	2,084	1,261	748	1,869	7,621
Other Services (except Public Administration)	63	40	27	213	6	8	688	325	208	245	1,823
Public Administration	296	158	19	401	0	29	2,064	283	287	845	4,382
<b>Total</b>	<b>3,334</b>	<b>2,134</b>	<b>532</b>	<b>5,608</b>	<b>199</b>	<b>368</b>	<b>25,149</b>	<b>10,368</b>	<b>3,065</b>	<b>10,343</b>	<b>61,100</b>

Note: Totals for the City of Sedona reflect the portion located in Yavapai County

Source: Arizona Department of Administration, Office of Employment and Population Statistics and Longitudinal Employer-Household Data (LEHD) 2011 Statistics from [www.onthemap.ces.census.gov](http://www.onthemap.ces.census.gov)

## COMMUTING PATTERNS

The U.S. Census Bureau provides some commuting or journey to work information that includes the primary mode of transportation to work, the number of people that reside and work in the same community and the number of people that reside in a community but commute to or from another community for work.

**Table A-7** summarizes the mode of transportation for workers age 16 and older used to go to work. As presented in the table, approximately 16.1% of those surveyed in Yavapai County carpooled, walked, or took public transportation to work, while over 74.3% drove alone. Residents in Chino Valley, Cottonwood, Prescott Valley and unincorporated Yavapai County were cited as having a high number of workers that carpool to work. Cottonwood, with 0.7% of workers commuting by transit, reflects the availability of the Lynx and CAT services.

**Table A-7: Means of Transportation to Work**

	Means of Transportation to Work (Workers Age 16 and Older)								
	Drove Alone	Carpooled	Public Transportation	Taxi	Motorcycle	Bicycle	Walked	Other Means	Worked at Home
Town of Camp Verde	73.3%	12.9%	0.2%	-	0.5%	0.4%	2.3%	0.5%	9.9%
Town of Chino Valley	71.0%	16.1%	-	-	-	0.4%	0.7%	1.5%	10.4%
Town of Clarkdale	85.2%	6.2%	-	-	1.0%	1.1%	0.9%	0.0%	5.6%
City of Cottonwood	72.0%	16.5%	0.7%	-	0.3%	1.4%	4.9%	0.8%	3.3%
Town of Dewey-Humboldt	84.6%	8.7%	-	-	0.0%	0.0%	2.1%	0.0%	4.6%
Town of Jerome	67.8%	4.5%	-	-	0.0%	0.0%	8.0%	2.3%	17.4%
City of Prescott	72.7%	11.0%	0.3%	0.2%	0.6%	1.0%	5.9%	0.7%	7.7%
Town of Prescott Valley	78.8%	13.6%	0.0%	0.5%	0.4%	1.3%	1.8%	0.3%	3.3%
City of Sedona	68.1%	7.5%	0.3%	-	0.0%	2.8%	4.4%	0.0%	17.0%
Unincorporated County	73.2%	14.3%	0.2%	-	0.7%	0.7%	2.4%	1.0%	7.4%
<b>Yavapai County Total</b>	<b>74.3%</b>	<b>12.9%</b>	<b>0.2%</b>	<b>0.1%</b>	<b>0.5%</b>	<b>1.0%</b>	<b>3.0%</b>	<b>0.7%</b>	<b>7.2%</b>

*Note: Totals for the City of Sedona reflect the portion located in Yavapai County*

*Source: 2010-2014 American Community Survey*



As reported by to the Arizona Department of Administration Office of Employment and Population Statistics, in 2015 Yavapai County had a civilian labor force of 97,755, of which 92,363 were employed. As previously mentioned, labor force estimates from the U.S. Census for the year 2013 were proportionately adjusted for the year 2015.

**Table A-8** displays the total employment jobs and labor force for each of the municipalities and provides an indication of how many workers are needed in the area relative to its labor force. As the table highlights, workers in the Yavapai County commute between communities within the County for work. In addition, nearly 45.2% of the workers in Yavapai County travel out of the county for work.

**Figure A-6** displays the percentage of commuter inflow and outflow by municipality. Camp Verde, Prescott, Prescott Valley, and the unincorporated County have a higher percentage of people who live and work in the area. Based on the total number of jobs and available labor force, people travel to Cottonwood, Prescott, Prescott Valley, Sedona, and Phoenix metro area communities for work as depicted by the higher percentage of commuter inflow to the areas.

**Table A-8: Year 2015 Employment and Labor Force**

	Total Employment	Commuter Inflow		Live and Work in Area		Labor Force (Age 16 and older)	Commuter Outflow	
		#	%	#	%		#	%
Town of Camp Verde	3,334	2,338	70.1%	996	29.9%	4,200	3,096	73.7%
Town of Chino Valley	2,134	1,688	79.1%	446	20.9%	3,733	3,240	86.8%
Town of Clarkdale	532	496	93.2%	36	6.8%	1,472	1,432	97.3%
City of Cottonwood	5,608	4,584	81.7%	1,024	18.3%	4,578	3,448	75.3%
Town of Dewey-Humboldt	199	178	89.4%	21	10.6%	1,467	1,443	98.4%
Town of Jerome	368	361	98.1%	7	1.9%	172	165	95.9%
City of Prescott	25,149	17,534	69.7%	7,615	30.3%	18,225	9,791	53.7%
Town of Prescott Valley	10,368	7,010	67.6%	3,358	32.4%	19,809	16,091	81.2%
City of Sedona	3,065	2,551	83.2%	514	16.8%	3,081	2,330	75.6%
Unincorporated County	10,343	6,274	60.7%	4,069	39.3%	35,626	31,115	87.3%
<b>Yavapai County Total</b>	<b>61,100</b>	<b>15,414</b>	<b>25.2%</b>	<b>45,686</b>	<b>74.8%</b>	<b>92,363</b>	<b>41,791</b>	<b>45.2%</b>

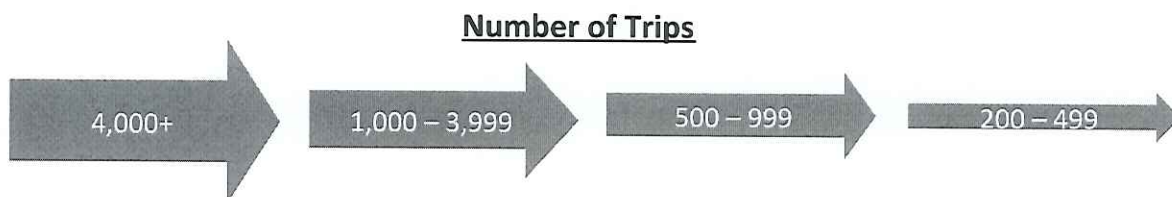
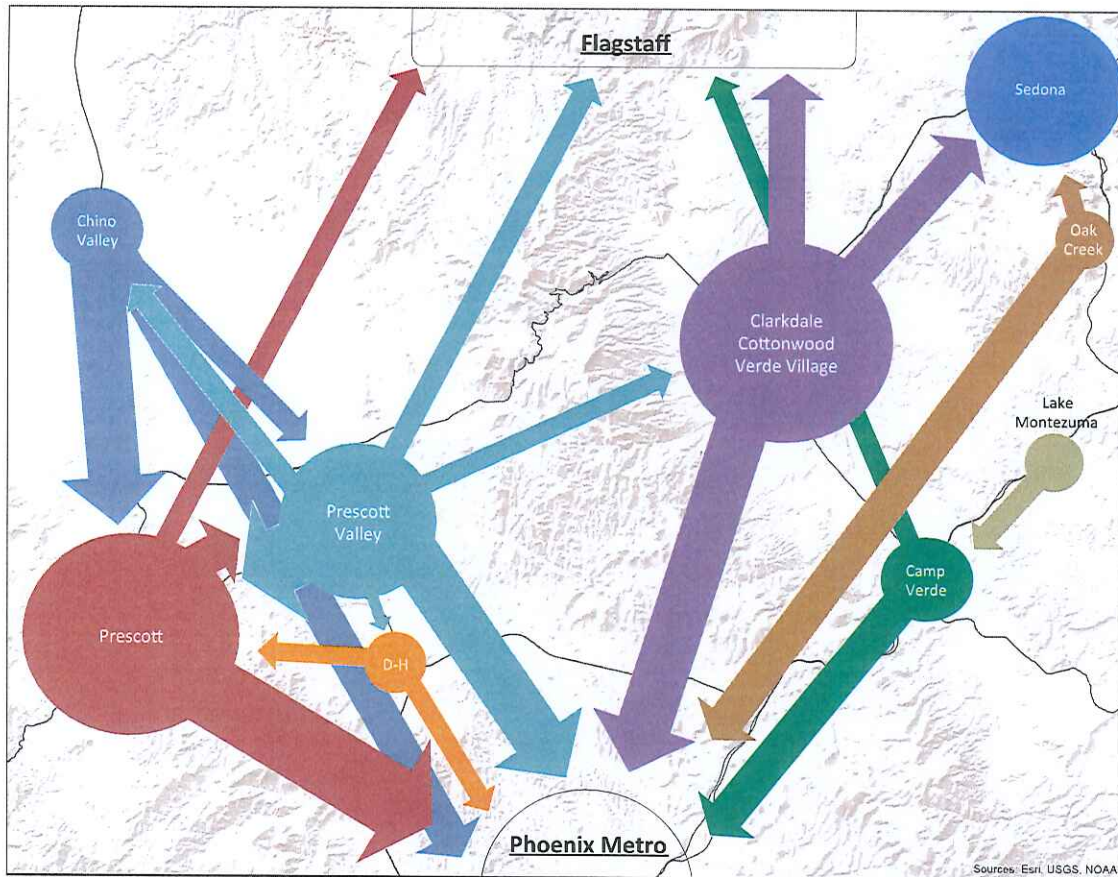
*Note: Totals for the City of Sedona reflect the portion located in Yavapai County*

*Source: Arizona Department of Administration, Office of Employment and Population Statistics and Longitudinal Employer-Household Data (LEHD) 2011 Statistics from [www.onthemap.ces.census.gov](http://www.onthemap.ces.census.gov)*



Figure A-6: Year 2015 Commuter In/Out Flow

## Commuter Work Flow



### Number of Non-Commuting Workers



## 6. EXISTING PROVIDERS

Four fixed route transportation services exist in the region for the general public.

- Cottonwood Area Transit (CAT) is the most comprehensive system, operating four local fixed routes, paratransit service, and a commuter line between Cottonwood and Sedona (The Lynx).
- Yavapai Regional Transit (YRT) operates local fixed route service in Chino Valley three days a week with limited regional service offered to Prescott and Prescott Valley.
- Yavapai Nation Transit operates fixed route service between the Yavapai Apache Nation medical center and the tribal community in Clarkdale.
- Prescott Transit Authority operates a Citibus fixed route loop within the City of Prescott for the general public.

A number of additional private and nonprofit transportation providers are present in the area, primarily operating for a specific clientele or age group and not for the general public. In addition, there is an active private for-profit sector providing taxi services, medical transportation for AHCCCS clients, and airport shuttle services. At present the airport shuttle services are the primary services to Phoenix although the Yavapai Apache Nation is hosting a greyhound stop at the Chevron Station in Middle Verde. Also, Prescott Transportation Authority, a private provider, has recently been awarded a contract by ADOT to provide intercity service between Prescott and Phoenix. This service will begin late in 2016.

This section describes first the fixed route service providers. It continues with a description of the non-profit providers who operate services for human service program clients, volunteer driver programs, and other services or needs. After the basic description, details on the services and their fleets are provided in a series of tables.

The information in this section comes from two sources. First, the data that NACOG has gathered on providers and their vehicle fleets forms a basis for the provider listing. Second, the study team utilized an online and hardcopy surveys to gather current data about service area and span, rider eligibility, fares, and type of vehicles owned and operated as well as information on ridership, funding levels and funding sources, and human service agency client needs. A copy of the questionnaire and information on survey responses is included as Exhibit 1 at the end of this document.

### GENERAL PUBLIC TRANSPORTATION

Public transit providers offer service to the general public and typically focus on a geographic or political area. Several separate systems exist in the Verde Valley and in the CYMPO area. Following this are brief summaries for each public transit provider in

the study area and additional information on the services operated. Table A-9 provides a summary of the available services.

**Table A-9: General Public Transportation Providers – Fixed Route & Ancillary**

Organization	Type of Service	Service Area	Service Hours
Cottonwood Area Transit	Fixed Route Commuter Bus Paratransit	Cottonwood, Clarkdale, Verde Villages; commuter service operates between Cottonwood and Sedona. Paratransit service is provided and limited demand response is also available in Village of Oak Creek, Cornville, and Camp Verde	Local routes & Paratransit: M - F: <u>6:45 AM-6:37 PM</u> Commuter bus: 7 days/week 6:00 AM – 7:12 PM
Yavapai Regional Transit	Fixed Route Demand Response	Chino Valley, Prescott, Prescott Valley	M - F: 8AM - 3PM
Yavapai-Apache Transit	Fixed Route	Prescott	M - F: 9AM - 5PM
Prescott Transit Authority - Citibus	Fixed Route	Prescott	M - F: 9AM - 5PM

***Cottonwood Area Transit (CAT)***

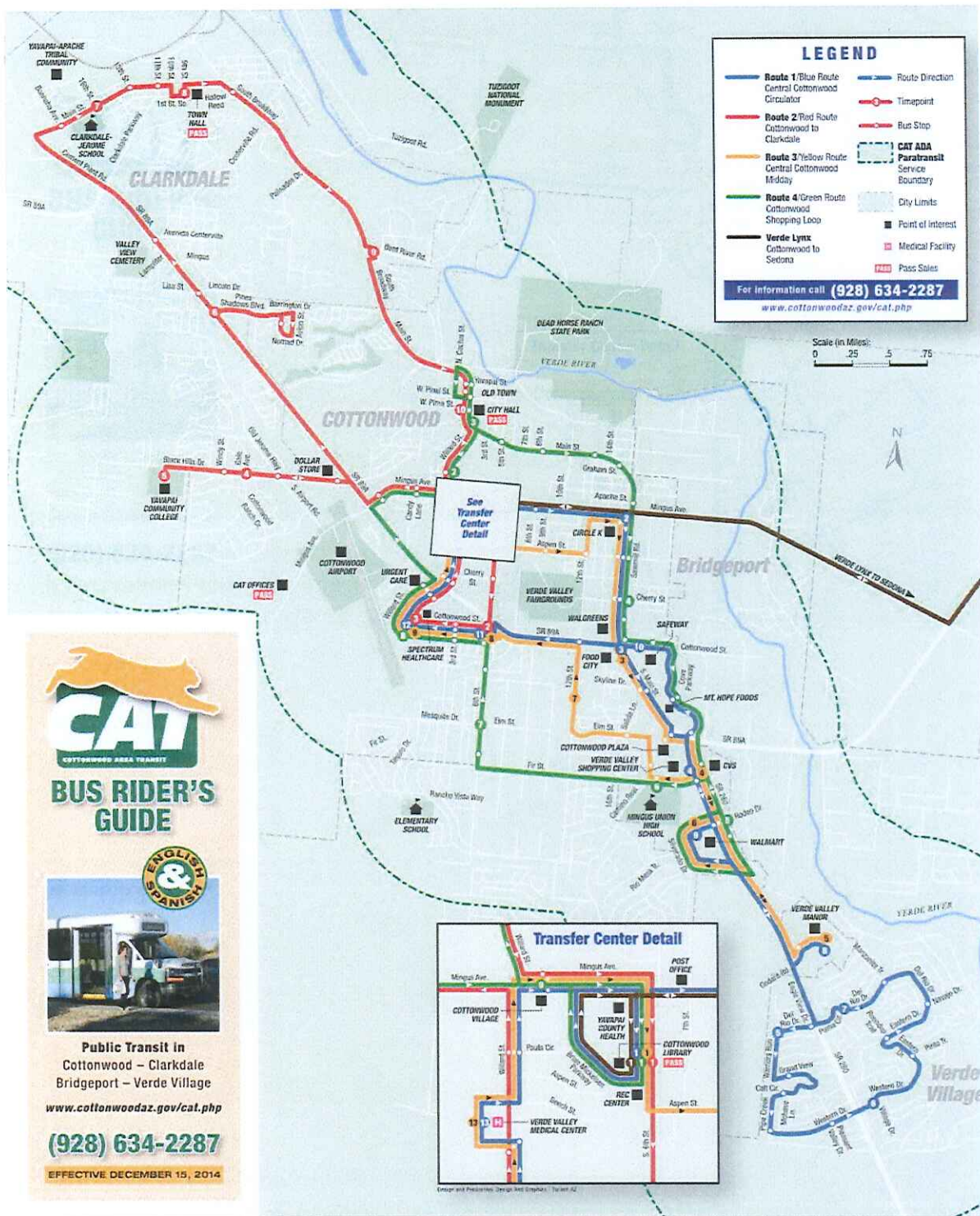
CAT operates a municipal fixed-route system in the Verde Valley with local and paratransit service operating Monday - Friday between 6:45 AM and 6:37 PM. Commuter service operates daily from 6:00 AM – 7:12 PM. The primary service area is Cottonwood and between Cottonwood and Sedona, with other communities served as described in the listing below. The routes in Cottonwood are primarily loops, which fit well into the street pattern, meeting every 45 minutes at the library to allow transfers. Complementary paratransit service is provided to residents that live within ¾-mile off a route that runs fixed-route service. Demand response service is offered in the Village of Oak Creek, Cornville, and Camp Verde. Detailed schedule information is available at <http://cottonwoodaz.gov/media/pdf/CAT-Guide.pdf> for local routes and <http://cottonwoodaz.gov/media/pdf/Lynx-Guide.pdf> for the Lynx. Maps follow as figures A-7 and A-8.

- The Green line serves the heart of Cottonwood, from Old Town and the town Hall on the north end to Wal-Mart on the south end of the route. In addition to serving many residential areas, it serves most shopping and medical clinics.
- The Yellow line serves a similar area, but provides coverage on additional streets. From the Library transfer center at the north end it travels south along Aspen St and South Main St (SR 260) to Wal-Mart and Verde Valley Manor. On its northbound return it serves Elm Street and 12<sup>th</sup> Street.
- The Blue line operates two morning and two evening trips oriented to workers. It covers some of the same area as the Yellow line, but continues south and makes a large loop in Verde Village.

**Figure A-7: CAT Local Services**



# Yavapai County Regional Mobility Management Implementation Plan



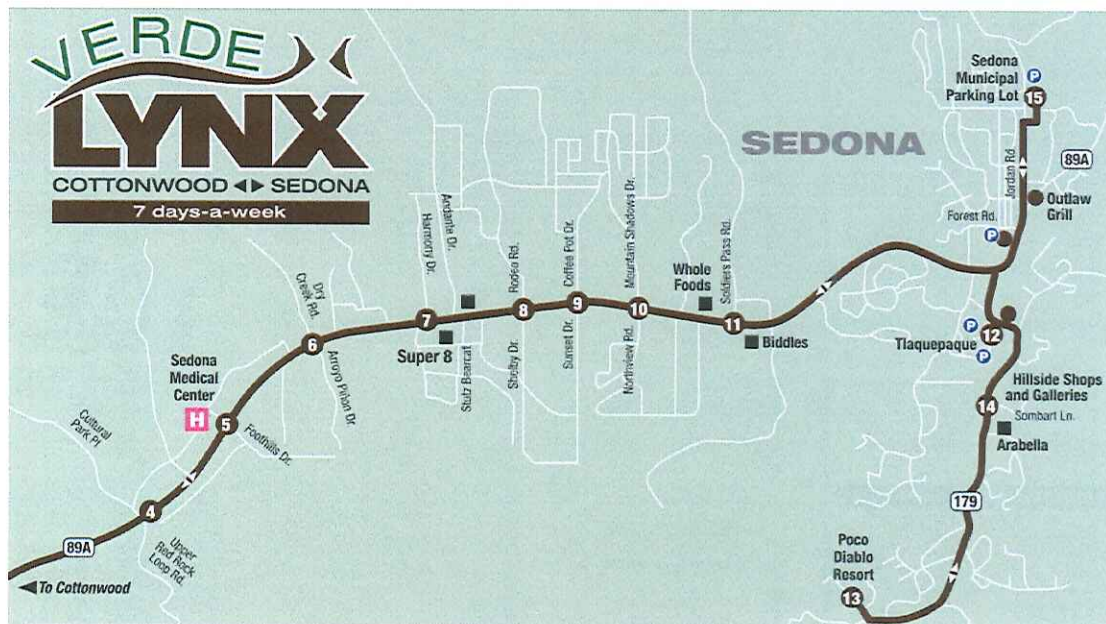
- The Red line travels north from the library on SR 89A to Clarkdale, and then returns to Cottonwood on South Broadway.
- The Verde Lynx route provides commuter service in the Cottonwood-Sedona corridor. The route travels east to Sedona and then south on 179 to Poco Diablo Resort. The Sedona Municipal parking lot is also served before the bus returns to Cottonwood. The Lynx operates daily with a schedule oriented to workers in the hospitality and restaurant industries. While most service is oriented to shifts starting at 7 AM in Sedona, some also operate mid-day to allow workers who begin at noon to get to work. Mid-day trips serve workers who get off work by 2-3 PM, and evening trips serve varying shift times with the last bus departing the Municipal lot at 6:38 PM.

Paratransit service is operated within ¾-mile of the four local fixed routes, during the same days and hours as fixed route service is available. The Americans with Disabilities Act does not require paratransit services to be provided for commuter routes, so none is provided in the Lynx corridor.

All buses are wheelchair accessible. The service requires five fixed route buses to operate the routes during the peak plus paratransit vehicles as scheduled.

This agency identified restrictive regulations between the various government programs as an issue that hinders coordination between agencies.

Figure A-8: Lynx Route Map





***Yavapai Regional Transit (YRT)***

Yavapai Regional Transit provides local bus service in Chino Valley and regional services between Chino Valley, Prescott, and Prescott Valley. This is a private non-profit operation with public support from Yavapai County and the ADOT 5311 Federal Transit Administration rural transit program. Detailed schedule information and route maps are available at <https://www.yavapairegionaltransit.com/>

- Gold Route: Local bus service within Chino Valley on Monday, Wednesday and Friday.
- Green Route: Bus service connecting Chino Valley and Prescott on Tuesday and Thursday.
- Red and Blue Routes: Regional service connecting Chino Valley with Prescott Valley and Prescott. The Blue route operates clockwise and the Red route operates counterclockwise. Three trips operate on Friday only.

Chino Valley has local service run three days per week, with service to Prescott three days a week, and Prescott Valley is serviced by two routes only on Fridays. Service is operated Monday through Friday 8 AM to 3 PM, not all destinations are served everyday. YRT would like to expand bus stops in each community and run 5 days per week in each community. The need for higher matching funds, more buses, and a labor pool experienced to support their system was identified as barriers to further coordination.

Yavapai Regional Transit has transitioned from a largely volunteer program to one that pays the majority of their drivers, and recognize that over time they need to plan for fewer volunteers.

YRT would like to expand services to better meet community needs, but recognizes the importance of developing a stable and secure local funding source. The program is largely funded through ADOT's rural transit program (5311) and as they expand to provide more urban area services they will need to access the FTA urbanized area funds. Accessing urbanized area funds will also allow YRT to route vehicles and serve stops that make the most sense for urban residents.

Figure A-9: YRT Green and Yellow Routes

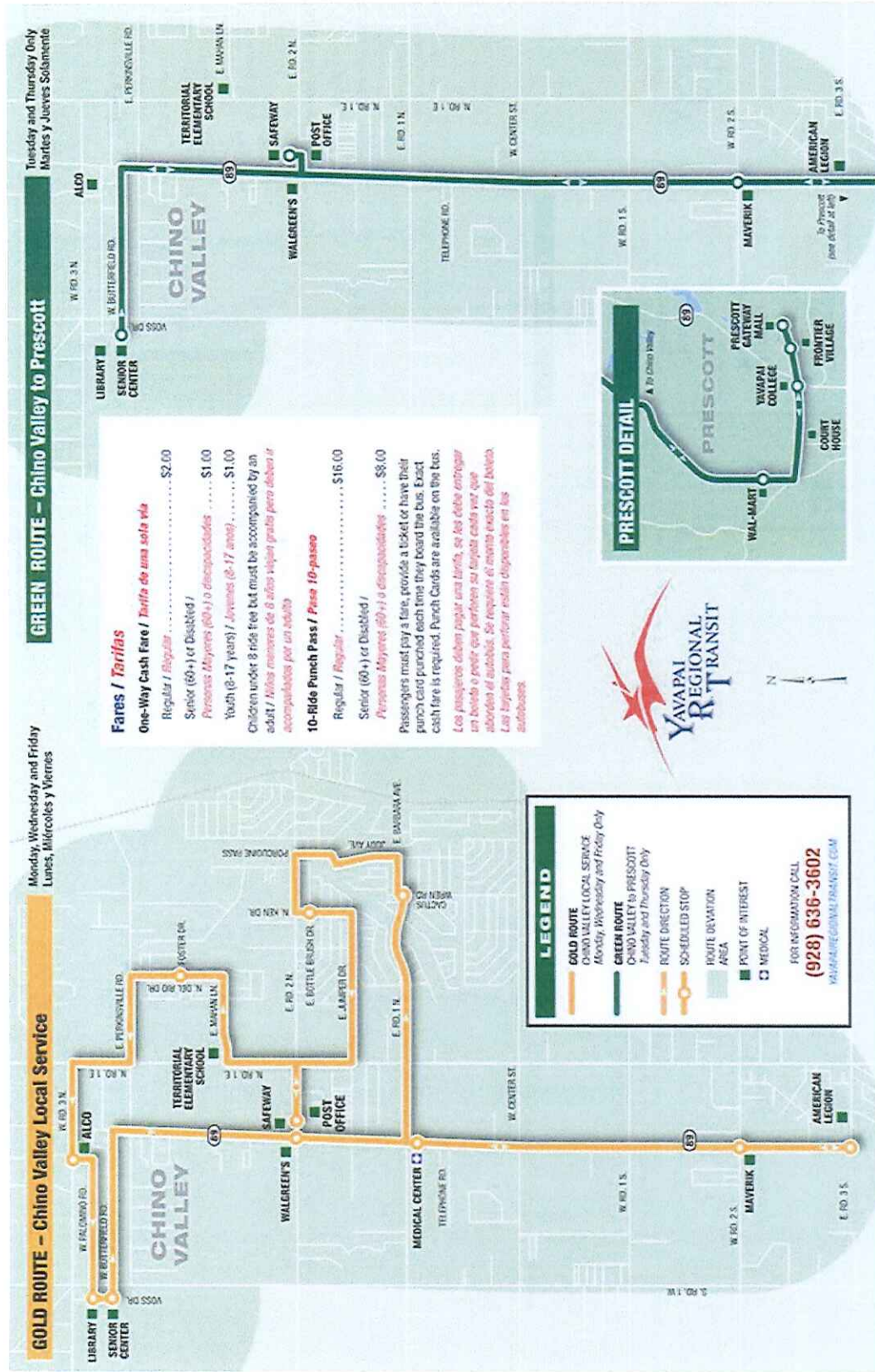
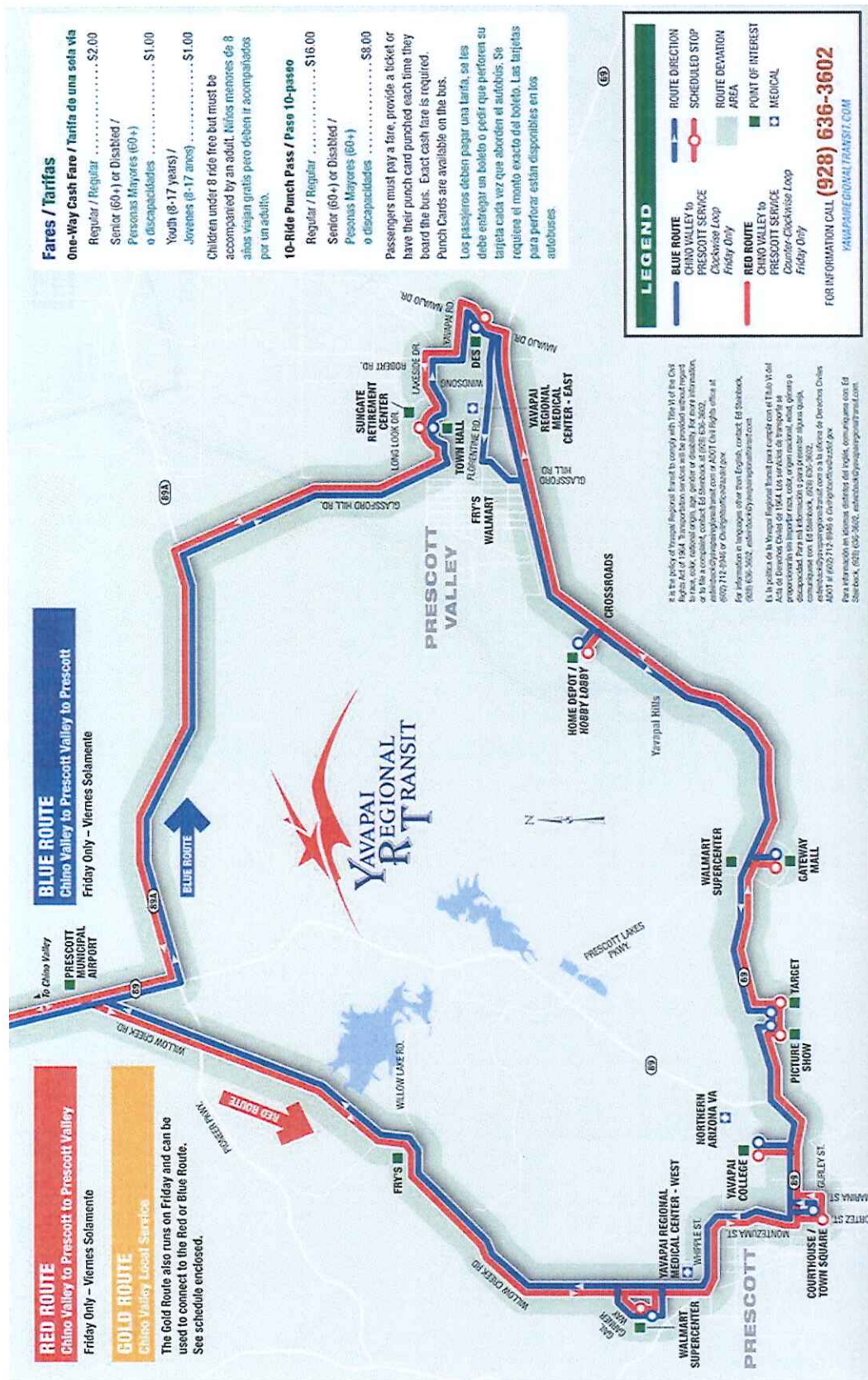




Figure A-10: YRT Red and Blue Routes

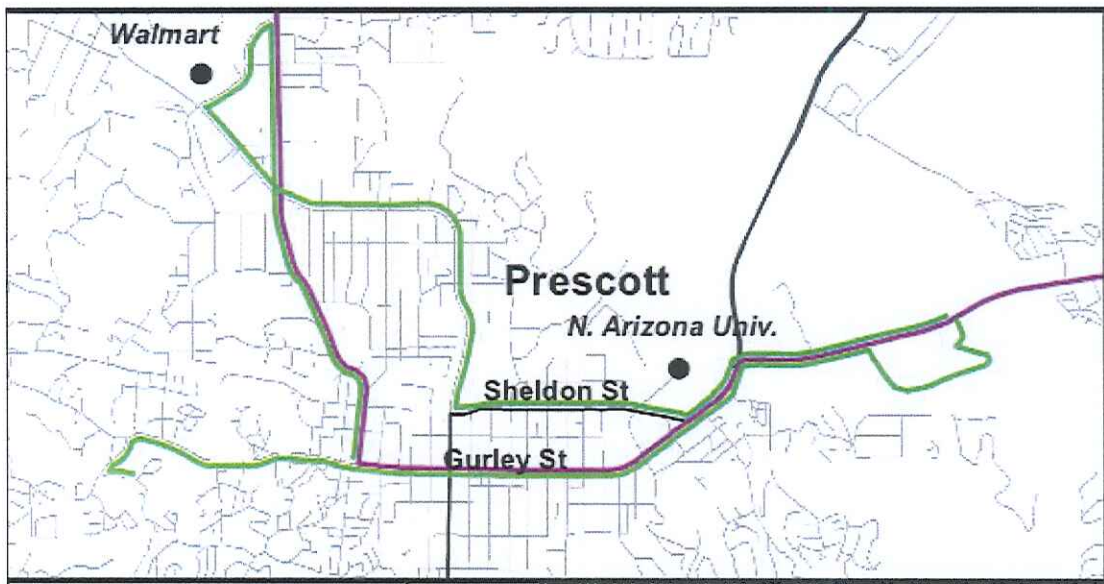




### ***Citibus***

Citibus operates a route in the City of Prescott that travels generally in a counter-clockwise loop. Prescott Transportation Authority operates the route at its own expense. Although Prescott Transportation Authority collects fares and sells advertising. Its Service is operated weekdays, 8 hours daily (9 AM-5 PM), with a cash fare of \$2.00. This provider helps connect residents with shopping, education, and employment centers. No changes were identified from this provider regarding the service they currently provide. The route map in Figure A-11 is based upon an older schedule and is approximate.

**Figure A-11: Citibus Route (Approximate)**



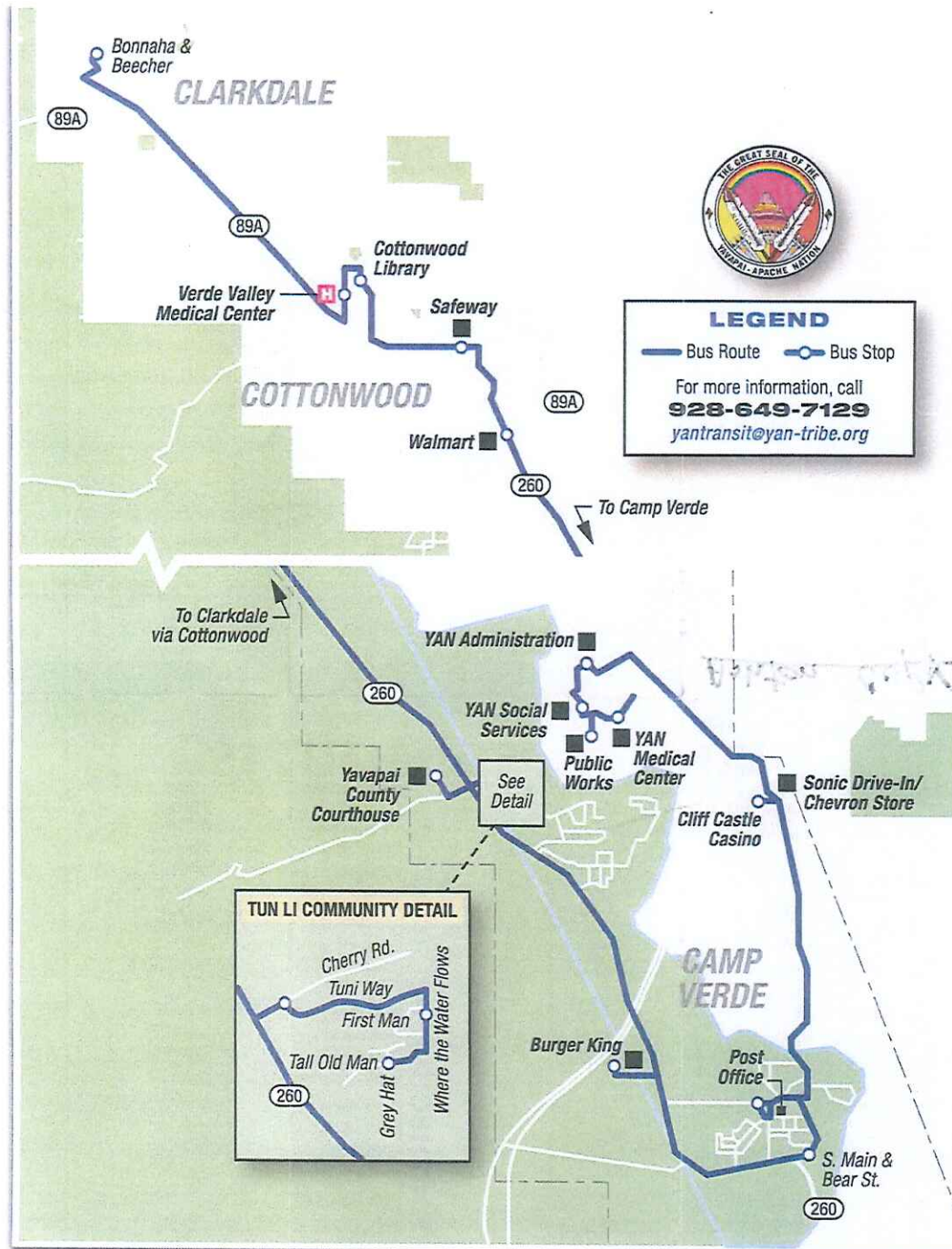
### ***Yavapai Apache Transit***

The Yavapai-Apache Tribe operates service between the reservation at the YAN Medical Clinic near Camp Verde to their tribal community in Clarkdale with two round trips daily. The trips depart the Yavapai Nation at Camp Verde at 10:45 AM and 12:45 PM. The Southbound trip departs the Tribal community in Clarkdale (Bonnaha and Beecher) at 10:30 AM and 2:30 PM. The system operates Monday through Friday. The routes are illustrated on the following page.

The YAT links into the Cottonwood Area Transit (CAT) system and Verde Lynx for those going on to the Sedona area. In Camp Verde, it links to Beaver Creek's volunteer bus program. YAT also provides a Greyhound agent at the Conoco station, enabling passengers to purchase tickets and board intercity services operating between Flagstaff and Phoenix as well as to connect to the national intercity bus network.

Figure A-12: Yavapai-Apache Transit Route Map

# YAVAPAI-APACHE TRANSIT ROUTE MAP





## Human Service Transportation Providers

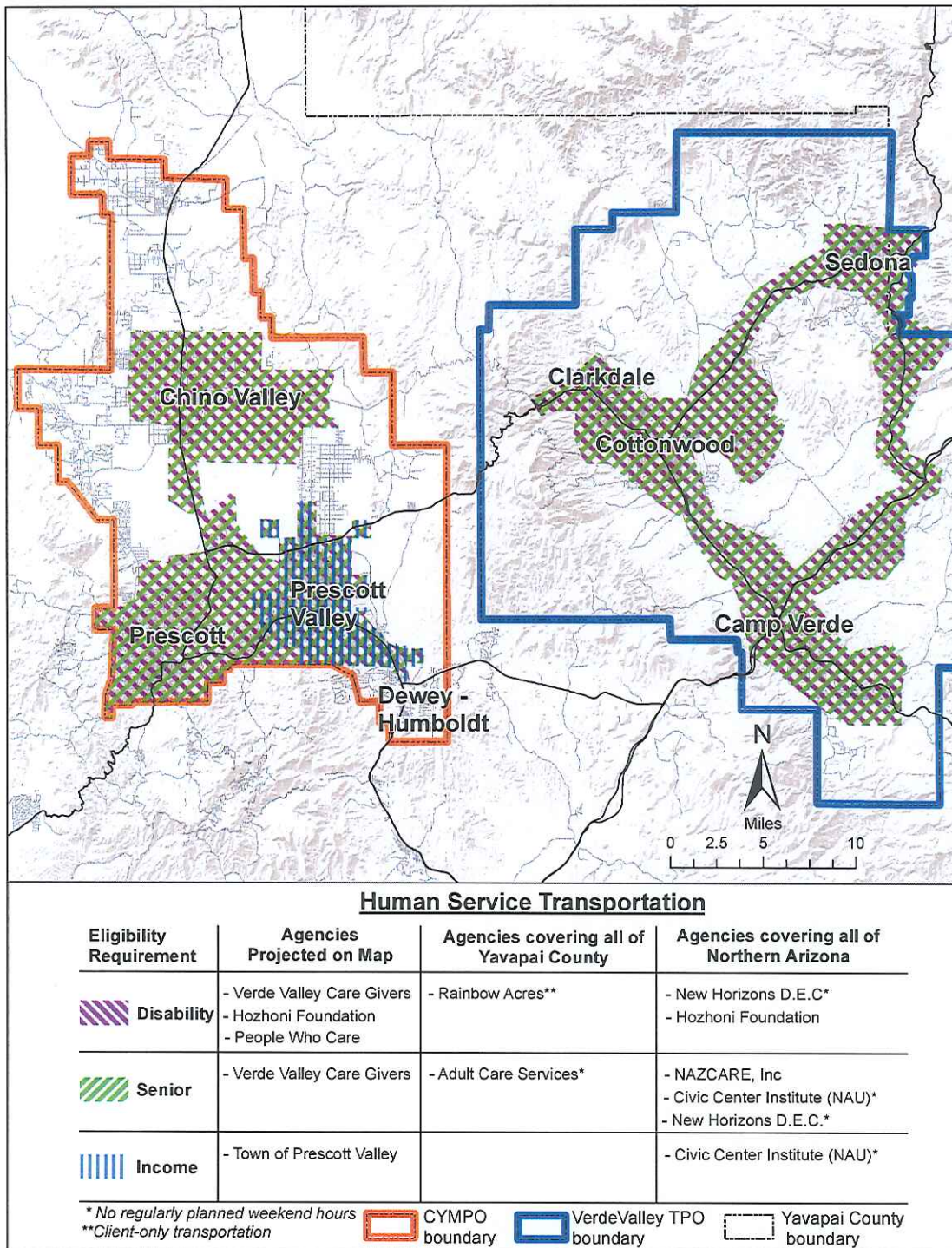
Many human service agencies in the area provide transportation to program clients. Typically program requirements are based on age, disability status, and income. Figure A-13 shows human services transportation in the CYMPO and Verde Valley regions.

The human service providers are summarized in Table A-9 and following are brief descriptions of where these agencies offer their services, what plans they have identified for the upcoming 5 years, and any perceived barriers to coordination. Information is only available for those that participated in the survey, have provided information to NACOG, and/or have participated in the study.

**Table A-9: Human Service Transportation Providers in CYMPO & Verde Valley**

Organization	Eligibility	Service Area	Service Hours
Adult Care Services	Older Adult	Prescott and Yavapai County	M - F: 8AM - 4PM
Beaver Creek Transit	Older Adults	Lake Montezuma, Rim Rock	Varies
Civic Service Institute at NAU (under ARBOR)	Older adult and Low income	Prescott, Prescott Valley, Cottonwood	M - F: 8AM - 5PM
Disabled American Veterans	Veteran	Prescott and Cottonwood; special trips to Phoenix VA	By appointment
Hozhoni Foundation	Disability	Prescott	Available 24/7
Intermountain Centers for Human Development	Disability & Foster Care	Yavapai County	M - F: 8:30AM - 5PM
NAZCARE	Older Adult	All of Northern Arizona	M - Sat: 9AM - 3PM
Mayer Meals on Wheels	Older adult & Disabled; GP too	Cordes Lake to Dewey-Humboldt to Prescott and Prescott Valley	M-F: 7:00AM – 2 PM
New Horizons D.E.C.	Older Adult & Disability	All of Northern Arizona	M - F: 6AM - 6PM
People Who Care	Older Adult & Disability	Chino Valley, Prescott, Prescott Valley	Varies
Rainbow Acres	Client-only/Older adult	Client-only; Camp Verde	Client request
Rusty's Morningstar Ranch	Disability	NR	NR
Tender Hearts Transportation	Older Adult & Disability	NR	NR
Verde Valley Caregivers Coalition	Older Adult & Disability	Verde Valley: Clarkdale, Cottonwood, Verde Village, Camp Verde, Village of Oak Creek, Sedona	M - F: 6AM - 8PM, Sat - Sun: 7AM - 6PM
Verde Valley Senior Center	Older Adults	NR	NR
Veterans' Transportation Services	Veterans	60-mile radius of Cottonwood; to VA Medical Center in Prescott	NR
Yarnell Volunteer Drivers	Older Adult & Disability	NR	NR

Figure A-13: Human Service Transportation in CYMPO & Verde Valley Regions





***Adult Care Service***

This program operates the Susan J. Rheem Adult Day Centers in Prescott, Prescott Valley, and Cottonwood. The programs focus is to provide social opportunities and nutritious meals to seniors in the region. Transportation is offered Monday through Friday 8 AM to 4 PM. Adult Care Services coordinate transportation to their centers for clients who are unable to drive themselves. No future changes were identified in regards to client transportation services. Insurance restrictions are a main barrier to coordination with other agencies.

***Beaver Creek Transit (BCT)***

Beaver Creek Transit (BCT) is an entirely volunteer operated and maintained community transportation service sponsored by the Beaver Creek Adult Center. BCT offers transportation for seniors and the disabled of all ages residing in the Montezuma Rimrock Fire District, including the small, rural unincorporated communities of Lake Montezuma, Rimrock, and McGuireville. The service area (requested destinations) includes Camp Verde (12 mi), Clarkdale, Cornville, Cottonwood (22mi), Lake Montezuma, Page Springs, Sedona (27 mi), Village of Oak Creek, Flagstaff (55 mi), Prescott (60 mi) and Phoenix/Mesa (120 mi).

***Civic Service Institute at NAU***

Volunteers through the Civic Service Institute at Northern Arizona University in Prescott provide transportation using their own vehicles. They receive a small stipend for their time and the costs they incur in operating service. The service is generally available Monday through Friday 8 AM – 5 PM and provides door-through-door assistance and support needed by the rider. This program focuses on the needs of seniors and persons with disabilities, offers volunteer opportunities to NAU college students or other seniors through the Retired Senior Volunteer Program (RSVP). Drivers receive a minimal stipend for their expenses.

Future plans for the Civic Service Institute program include recruiting additional volunteers within Yavapai County, so they may serve more clients. They collaborate whenever possible with referrals and attempts to serve clients of other agencies through their normal channels of partnerships. A barrier to coordination is the inability to do ride shares or vehicle sharing is that volunteers use their own vehicles.

***Disabled American Veterans***

The DAV provides veterans transportation utilizing volunteer drivers. Service days from the Verde Valley area to the Prescott VA hospital are Monday, Wednesday and Friday. Trips are made to the Phoenix VA hospital on Tuesdays and Thursdays. The DAV focuses on the transportation of ambulatory clients only (vans and minivans do not have lifts). Trips must be scheduled three business days in advance.

The Verde DAV occasionally coordinated service with Verde Valley Veterans Vans. However, with the closure of Verde Valley Veterans Vans the volume of trips has doubled for the DAV. Staff reported no concerns with meeting this ridership demand.

***Hozhoni Foundation***

This agency has a facility in Prescott and offers full services to adults with disabilities. They have residential and day programs, as well as support resources. Transportation to clients is available 24 hours a day and is provided by direct care staff to their Prescott facility. Transportation for social and shopping trips is also provided. In the next 5 years, Hozhoni is attempting to grow its Prescott Day Program services. They anticipate needing additional ADA-compliant vehicles and wheelchair vans to meet program demands within the next one to two years. Limitations on vehicle sharing and insurance restrictions are the main barriers to coordination.

***Intermountain Centers for Human Development***

Intermountain Centers for Human Development operates a residential and day program in Chino Valley for adults with developmental disabilities. Transportation is available for clients who are unable or do not have the means for transportation to the day program facility. Transportation is also provided for residential clients to meet their activities of daily living.

***NAZCARE***

NAZCARE operates wellness centers all over Northern Arizona for individuals struggling with substance use issues. It operates the New Hope Wellness Center in Prescott and the Serenity Wellness Center in Cottonwood. No major expansions or improvements regarding this agency's transportation service were named. Insurance and government program restrictions are the primary barriers hindering coordination.

***New Horizons D.E.C.***

The New Horizons Disability Empowerment Center is located in Prescott Valley and serves adults with disabilities across Yavapai County. They provide ambulatory and wheelchair transportation to clients who need to reach medical, employment, and social appointments. While service is available to clients at anytime, 24-hour notice is requested. There are no major plans in the next 5 years in regards to the transportation program. Available funding is the main barrier to this agency's coordination efforts.

***Mayer Meals on Wheels***

The Mayer Meals on Wheels program has volunteer drivers who transport residents of Mayer and Dewey-Humboldt locally or to Prescott Valley or Prescott. A wheelchair van is available by appointment. They arrange bi-monthly shopping trips. They will schedule trips Monday-Friday, between 7 AM and 2 PM. The passenger fares vary, with \$2.00 for agency clients, or a \$30 flat rate for a round trip for others. Donations are accepted.

***People Who Care***

Located in Prescott, this program provides essential transportation (healthcare appointments, support group meetings, etc.), help with grocery shopping and personal paperwork, handyman help, and many other services to frail seniors. While their primary location is in the City of Prescott, they also have an office in Prescott Valley and try to serve

Chino Valley and other outlying locations when volunteers are available. Volunteers using their own vehicles operate transportation Monday through Friday 8AM to 6PM. This agency identified support for volunteer mileage reimbursement and community support of transportation services as something that would help improve transportation services for clients. The director noted that overcoming the message of “No new taxes” and reframing discussions in terms of “This is what transportation does to benefit the community” would help to improve coordination efforts between agencies and municipalities.

***Rainbow Acres***

Located in Camp Verde, this not-for-profit assisted living community for individuals over 18 with developmental disabilities provides transportation on a 24-hour basis for its clients. Transportation is provided by employees of the center and cover every aspect of transportation needs from medical appointments and social trips to grocery shopping and extracurricular activities. No major expansion of their transit options is proposed for the foreseeable future. Insurance restrictions are their main barrier to coordination.

***Rusty’s Morningstar Ranch***

Did not participate in the survey nor the study. No information available.

***Tender Hearts Transportation***

Did not participate in the survey nor the study. No information available.

***Town of Prescott Valley***

Provides \$50,000 worth of taxi vouchers to low income residents and who need transportation. In any given month, the program serves about 125 residents and provides just over 500 trips per month to these residents. The program is managed by NACOG and has been essential in meeting some of the most critical needs in the community.

***Verde Valley Caregivers Coalition***

Based out of Sedona, this program provides volunteers, programs and services to support adults in need of assistance in maintaining their independence and quality of life at home. They provide service across Yavapai County in Cottonwood, Clarkdale, Jerome, Sedona, Village of Oak Creek, Camp Verde, Rimrock, and Lake Montezuma. Transportation is provided by volunteers who assist clients with loading and unloading bags, accompaniment to medical appointments, and various other appointments and errands. If funding is reduced, the agency will have to close all its programs, not just transportation. Coordination is currently taking place with Cottonwood Area Transit, but funding is still the main barrier to coordinating with other agencies in the region.

***Verde Valley Senior Center***

Did not participate in the survey nor the study. No information available.

***Veterans Transportation Services***

The VA’s Cottonwood Out-based Clinic (CBOC) provides medical service for all veterans in the Verde Valley. A complimentary, fee-based transportation program began in October

2010 under the office of Rural Health Services, and in October 2011, transportation migrated into the Veterans Transportation Service (VTS).

VTS offers transportation within a 60-mile radius of the Cottonwood CBOC for ambulatory and non- ambulatory veterans. VTS will travel further beyond the 60-mile radius pending on advance scheduling. VTS works closely with the DAV, the non-profit transportation program operating under the umbrella of the VA, through sharing information and coordinating trips.

#### ***Yarnell Volunteer Drivers***

Yarnell has a small volunteer driver program that split off from People Who Care. Similar to PWC, they provide essential transportation and help with grocery shopping for frail seniors. No detailed information is available on hours , days of service, or ridership levels.

### **PROVIDER SUMMARY**

#### ***General Public Services***

General public fixed route services are most prominent in the Verde Valley where Cottonwood Area Transit and the Lynx provide regular service on approximately 45-minute frequencies on weekdays. In addition, the Citibus service in Prescott, though limited, provides hourly service on its loop.

The remainder of the fixed route services are of limited days and trips. Yavapai Regional Transit provides six hours of service three days a week in Chino Valley; and three trips on the routes serving Prescott (Green line, operating Tuesday and Thursday) and three trips on the routes serving Prescott Valley (Fridays). Yavapai-Apache Transit provides a connection with one daily trip Monday through Friday. These are vital connections, but provide more of lifeline services than opportunities to commute or even get by without a car (although this could be feasible for Chino Valley residents) and still participate in all the activities of daily living.

Fixed route providers generally have a significant role in providing paratransit services, but in Yavapai County, only CAT provides paratransit services for services in four main local routes operated by CAT. The Lynx is commuter service and YRT will deviate so passengers with disabilities (and others requesting deviations) can be served.

Information on service levels and financial characteristics gathered from survey responses, National Transit Database information, and NACOG information is contained in the main Mobility Management Implementation Plan.

#### ***Specialized Transportation Services***

Specialized transportation services are provided by a variety of organizations, and the many private providers who operate taxis and medical transportation support the network by providing trips funded by human service agency programs.



Some providers and programs are available only to program clientele, but some serve the general population of riders who are elderly or have disabilities. Beaver Creek Transit, the Civic Services Institute at NAU, People Who Care, Town of Prescott Valley taxi voucher program, and Verde Valley Caregivers Coalition will serve all passengers whose conditions mean that such specialized services are required. New Horizons Disability Empowerment Center (NHDEC) serves both the general population of individuals with disabling conditions and the elderly and individuals whose trips are funded by human service programs. NHDEC has a limited budget. In any one area there is often just one or a limited number of options for individuals whose trips are not covered by a specific human service program. The Town of Prescott Valley is an exception, as their taxi voucher program, NHDEC, and People Who Care each provide some services, although the volume of trips available in the Town of Prescott Valley remains quite limited.

Table A-10 summarizes the level of service, operating costs and vehicles in each fleet. It provides some key performance measures for each system. Some key points are:

Table A-10: Specialized Transportation Providers

System	Ind. Pass Served	Ridership (2015-16)	Annual Miles	Annual Hours	Estimated Operating Costs	Number Vehicles	Cost/ 1-way Trip	Cost / Hour	1-way Trips / Hour	Cost / Mile	1-way Trips / Vehicle
Adult Care Services – S Rheem Center	227	27,660	175,398	5,594	\$262,271	19	\$9.48	\$46.88	4.9	\$1.50	1,456
Beaver Creek Transit	140	3,886	33,000	1,995	\$17,000	2	\$4.12	\$8.52	2.1	\$0.52	2,061
NAU Civic Service Insti.	35	2,315	20,772	NR	\$17,250	N/A	\$7.44	N/R	N/R	\$0.83	N/A
Disabled American Veterans	NR	NR	NR	NR	NR	2	NR	NR	NR	NR	NR
Hozhoni Foundation	NR	NR	NR	NR	NR	NR	NR	NR	NR	NR	NR
Intermountain Centers for Human Development	NR	NR	NR	NR	NR	NR	NR	NR	NR	NR	NR
Mayer Senior Center	34	692	6,435	455	\$13,719	1	\$19.83	\$30.14	1.5	\$2.13	692
NAZCARE	NR	7,206	90,048	6,679	\$283,282	7-Yavapai 13- Total	\$39.31	\$42.41	1.1	\$3.15	554
New Horizons D.E.C.	NRC	11,193	282,693	22,367	\$390,355	13	\$34.87	\$17.45	0.5	\$1.38	861
People Who Care	NR	18,821	NR	NR	NR	N/A	NR	NR	NR	NR	N/A
Rainbow Acres	NRC	20,551	139,871	11,586	\$252,404	12	\$12.28	\$21.79	1.8	\$1.80	1,713
Rusty's Morningstar Ranch	7	450	18,000	730	\$3,532	3	\$7.87	\$4.85	0.6	\$0.20	150
Tender Hearts Transportation	NR	NR	NR	NR	\$25,000	NR	NR	NR	NR	NR	NR
Verde Valley Caregivers	1,420	22,000	298,000	27,000	\$310,000	N/A	\$14.09	\$11.48	0.8	\$1.04	N/A
Verde Valley Sr. Ctr.	NR	NR	NR	NR	NR	NR	NR	NR	NR	NR	NR
Vets Transportation Svc	5,944	5,728	87,875	5,265	\$406,797	8	\$71.02	\$77.26	1.1	\$4.63	716
Town of Prescott Valley	150 est.	6,292	N/A	N/A	\$50,000	taxis	\$7.95	N/A		N/A	N/A
TOTALS - AVERAGES	7,957	126,794	1,152,092	81,671	1,698,611	73	\$13.79	\$20.80	1.5	\$1.47	1,651

N/A = Not applicable; NR = Not reported; NRC = Not reported correctly

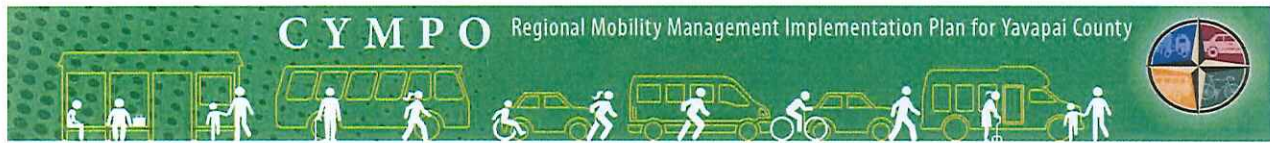
- Over 120,000 rides are provided in a county with a population of 214,000 residents. This is approximately 0.6 rides per capita. This does not include the medical trips paid for by AHCCCS and provided via taxi providers. More than half of the reported trips are for program clients: if we estimate that half of NHDEC's ridership is for program clients, then about 50,000 annual rides (0.23 per capita) are available for the general elderly and disabled populations and 70,000 rides are for clients of programs.
- There are both many gaps in data and numbers where costs do not appear to be fully reported. The costs per mile reported by NAZCARE and Veterans' Transportation Services (\$3.15 and \$4.63) are in line with industry averages. Many of the other costs do not appear to fully report the cost of labor and perhaps other expenses. For example, are insurance costs uniformly included? Will the value of volunteer labor be included? Both agreement on what costs are included and work to bring consistency to the reporting will be important.
- These specialized providers represent a significant investment in service hours (81,700), service miles (1,152,000), and vehicle fleets (73).

A full vehicle roster is attached as Exhibit 2.



The overall response rate was 59%. Some agencies responded by completing a hard copy, some by Survey Monkey, and some through a personal interview. Table A lists the agencies who received surveys and those which completed surveys.

[illegible]



## TRANSPORTATION PROVIDER SURVEY

The purpose of this is to develop baseline information about transportation services available in Yavapai County for improving mobility. This survey is being conducted as part of the CYMPO Regional Mobility Management Plan. It is a key element in our planning for broader coordination efforts. Your cooperation and assistance is appreciated.

Please complete and return your survey with a vehicle roster October 2<sup>nd</sup>, 2015 to:

TransitPlus, Inc.  
PO Box 637  
Elizabeth, CO 80107

You may scan and e-mail it to Michael Koch at [Michael.koch@transitplus.biz](mailto:Michael.koch@transitplus.biz)

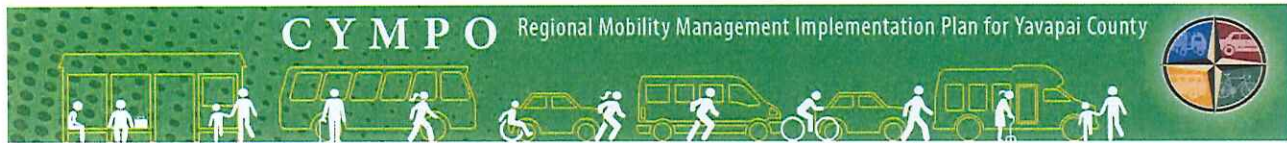
### A. General Information

1. \_\_\_\_\_  
Agency, Community, or Company Name
2. \_\_\_\_\_  
Street Address
3. \_\_\_\_\_  
City, State, Zip Code
4. \_\_\_\_\_  
Telephone
5. \_\_\_\_\_  
Name of Agency Director/Contact Person  
Telephone #, if different: \_\_\_\_\_
6. Which of the following best describes your agency?  
  
☐ Private, non-profit      ☐ Private, for-profit      ☐ Public      ☐ Other
7. Which of the following best describes your situation with regard to transportation services? (Please check only one)  
  
☐ We provide transportation to the general public.  
☐ We are a human service agency that provides transportation to our clients, either directly by our agency or through contracted services.  
☐ We are a human service agency that does not provide transportation but provides support or assistance for transportation to those who are in need of it.





## Yavapai County Regional Mobility Management Implementation Plan



8. Which services does your agency provide? Check all that apply.

- |   |  |  |
|---|--|--|
| <input type="checkbox"/> Adult Day Care       | <input type="checkbox"/> Job Placement       | <input type="checkbox"/> Senior Center           |
| <input type="checkbox"/> Child Day Care       | <input type="checkbox"/> Medicaid            | <input type="checkbox"/> Sheltered Employment    |
| <input type="checkbox"/> Chore Services       | <input type="checkbox"/> Medical/Dental      | <input type="checkbox"/> Support Employment      |
| <input type="checkbox"/> Congregate Nutrition | <input type="checkbox"/> Mental Health       | <input type="checkbox"/> Transportation          |
| <input type="checkbox"/> Counseling           | <input type="checkbox"/> Recreational/Social | <input type="checkbox"/> Volunteer Opportunities |
| <input type="checkbox"/> Education/Training   | <input type="checkbox"/> Rehabilitation      | <input type="checkbox"/> Welfare/Food Stamps     |
| <input type="checkbox"/> Head Start           | <input type="checkbox"/> Religious           | <input type="checkbox"/> Other: _____            |
| <input type="checkbox"/> Home-Delivered Meals | <input type="checkbox"/> Residential Care    |  |

9. Does your agency have eligibility requirements? ☐ Yes ☐ No

If YES, please check all that apply:

- ☐ Age – please specify: \_\_\_\_\_
- ☐ Disability—please specify: \_\_\_\_\_
- ☐ Income - please specify: \_\_\_\_\_
- ☐ Other – please specify: \_\_\_\_\_

10. What geographic area do you serve?

The entire county of: \_\_\_\_\_

The entire city or towns of: \_\_\_\_\_

Other: (please specify): \_\_\_\_\_

11. Please check each day of the days of the week that you provide transportation services. On the right, indicated the hours during which service is available to your clients:

<u>Day of the Week</u>	<u>Hours of service availability each day:</u>
<input type="checkbox"/> Monday	_____
<input type="checkbox"/> Tuesday	_____
<input type="checkbox"/> Wednesday	_____
<input type="checkbox"/> Thursday	_____
<input type="checkbox"/> Friday	_____
<input type="checkbox"/> Saturday	_____
<input type="checkbox"/> Sunday	_____

12. Do you provide transportation service in any of the following ways (check all that apply)?

- ☐ We operate our own vehicles.
- ☐ We contract with someone else who provides transportation services for us.
- ☐ We purchase and provide public transit tickets and passes so our clients can ride public transit buses.
- ☐ Some of our clients reach our services using public transit regular bus service.
- ☐ Some of our clients reach our services using public transit paratransit.
- ☐ Some of our clients reach our services using other transportation services.







☐ We work with volunteer drivers to provide transportation.

☐ Other (please explain) \_\_\_\_\_

13. Which of the following describes the type of transportation service you offer (check all that apply):

☐ Client-only transportation

☐ Fixed Route

☐ Demand Response – please specify geographic limits of service \_\_\_\_\_

*With whom do clients schedule demand-responsive/subscription services?*

☐ Dispatcher/Scheduler ☐ Driver ☐ Caseworker ☐ Manager

☐ Secretary/Receptionist ☐ Other – please specify \_\_\_\_\_

14. Do you limit the kinds of trips for which a client can use your transportation service? *Please include any restrictions such as the number of trips that are allowed in one month, trip purposes allowed, etc.*

☐ No

☐ Yes (Please explain) \_\_\_\_\_

15. Please describe any special needs that passengers on your transportation service may have. Identify if caseworkers need to travel with clients.

\_\_\_\_\_  
\_\_\_\_\_  
\_\_\_\_\_  
\_\_\_\_\_

## B. Drivers and Vehicles

16. Do your drivers receive any sort of formalized driver training program? ☐ Yes ☐ No

If YES, please describe (include course name, who provides the training, length of training, certification, etc.): \_\_\_\_\_

\_\_\_\_\_  
\_\_\_\_\_  
\_\_\_\_\_  
\_\_\_\_\_

17. Do you have written standard operating procedures for drivers? ☐ Yes ☐ No

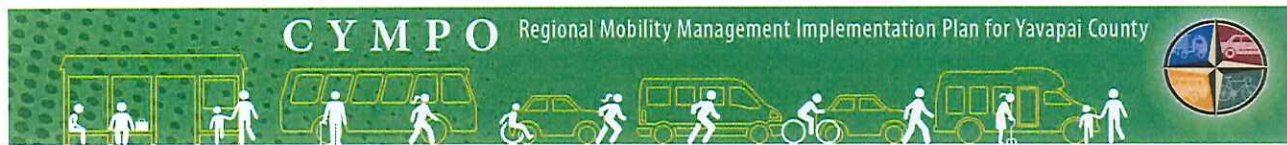
18. Where are your vehicles maintained?

☐ At a private garage, repair shop, or dealership.

☐ By a government agency, please specify: \_\_\_\_\_



## Yavapai County Regional Mobility Management Implementation Plan



\_\_\_ In-house, please describe: \_\_\_\_\_

19. How many of your vehicles need to be replaced?

\_\_\_ Now \_\_\_ Within the next year \_\_\_ Within the next two years

20. Who operates the vehicles?

\_\_\_ Full-time drivers – how many? \_\_\_  
\_\_\_ Part-time drivers – how many? \_\_\_  
\_\_\_ Volunteer drivers - how many? \_\_\_  
\_\_\_ Full-time staff with other primary job function - how many? \_\_\_  
What is their primary job function? \_\_\_\_\_  
\_\_\_\_\_

21. Does your agency reimburse staff or volunteers to transport clients using personal vehicles?

\_\_\_ Staff \_\_\_ Volunteers \_\_\_ Neither \_\_\_ Other (please specify) \_\_\_\_\_

21-a. What is your reimbursement rate? \$ \_\_\_ per mile.

21-b. How many miles of client transportation did you reimburse during the past fiscal year?

21-c. What was the total amount spent on staff or volunteer reimbursement for transportation during the past fiscal year? \$ \_\_\_\_\_

21-d. On the average, how many staff hours per week are spent transporting your clients in personal vehicles? \_\_\_\_\_ Hours

21-e. How many one-way passenger trips were provided in this manner during the past fiscal year? (please estimate, if necessary) \_\_\_\_\_

22. What is your fiscal year? \_\_\_\_\_ To \_\_\_\_\_

For which year is the data on this survey reported? \_\_\_ 2013-14 \_\_\_ 2014-15 \_\_\_  
Other \_\_\_ please  
specify: \_\_\_\_\_

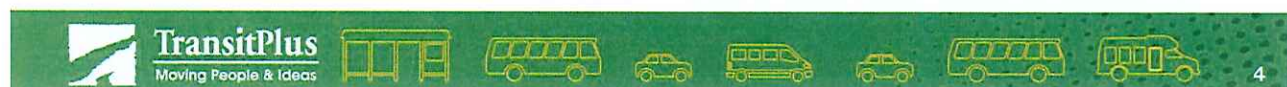
23. How many one-way passenger trips did your agency provide during the past fiscal year?

\_\_\_ Is this an estimate? \_\_\_ Yes \_\_\_ No

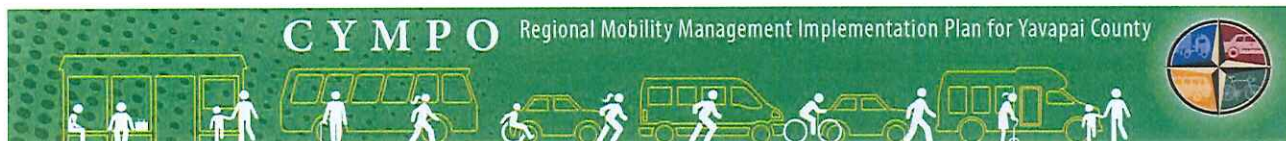
*Note: a one-way passenger trip means that each time a person board and then alights from a vehicle is counted as one trip. Return trips are counted as a second trip.*

24. How many vehicle miles of service did your agency provide during the past fiscal year?

\_\_\_ Is this an estimate? \_\_\_ Yes \_\_\_ No



## Yavapai County Regional Mobility Management Implementation Plan



25. How many vehicle hours of service did your agency provide during the past fiscal year?

\_\_\_\_\_ Is this an estimate? ☐ Yes ☐ No

26. Does your agency charge fares or request contribution/donations for transportation?

☐ Yes ☐ No

If YES, which?

\_\_\_\_\_ Fare – please specify amount \$ \_\_\_\_\_ or attach a schedule.

\_\_\_\_\_ Contributions – what is the suggested contribution \$ \_\_\_\_\_

27. Do you currently contract to transport clients of any other agencies or organizations?

☐ Yes ☐ No

If YES, please provide the number of one-way passenger trips provided in the past fiscal year, the billing rate and basis, and the total charge for the past fiscal year for each agency or organization.

Organization Name Contact Person, Telephone Number	One-way Passenger Trips	Unit Charge (\$ per mile, \$ per pass.)	Total Charge for the Past Fiscal Year
<i>Example: Sheltered Workshop</i>	<i>250</i>	<i>\$1.15 per trip</i>	<i>\$287.50</i>
<i>John Doe (928) xxx-xxxx</i>			

28. Does your agency purchase client transportation from another organization? ☐ Yes ☐ No

If YES, please complete the table below.

Name of organization from which service is purchased	Type of Organization	Description of Service Purchased	Unit Cost (per mile, hour, or trip?)	Total Cost during Past Fiscal Year	Total One-way Trips during Past FY
<i>Example: Joe's Cab</i>	<i>Taxi</i>	<i>Demand-responsive</i>	<i>\$1.00/mi</i>	<i>\$5,350</i>	<i>800</i>







### C. Agency Expenses and Revenues

29. What were your agency's administrative outlays and expenditures during the past fiscal year for passenger transportation? Please apportion salaries and other expenses attributable to transportation. For example, if your bookkeeper spends one day per week on transportation tasks, list 20 percent of his/her salary and fringe costs.

#### Administrative and Indirect Expenses

#### Dollar Cost

1. Director's salary	\$ _____
2. Director's fringe benefits	\$ _____
3. Secretarial salary	\$ _____
4. Secretarial fringe benefits	\$ _____
5. Bookkeeper salary	\$ _____
6. Bookkeeper fringe benefits	\$ _____
7. Office supplies, materials, rent, telephone, and utilities	\$ _____
8. Administrative travel	\$ _____
9. Non-vehicle casualty and liability costs	\$ _____
10. Other – please specify: _____	\$ _____
<b>Total Administrative Expenses</b>	<b>\$ _____</b>

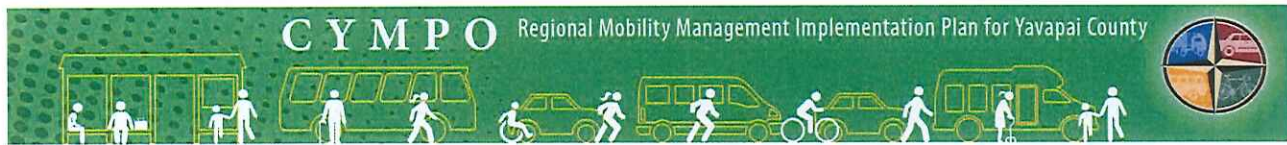
30. What were your operating expenditures for transporting clients in the past fiscal year? If full-time staff function as drivers part-time, please apportion their salaries accordingly and list under drivers' salaries.

#### Operating Expenses

1. Drivers' salaries	\$ _____
2. Drivers' fringe benefits	\$ _____
3. Dispatchers' salary	\$ _____
4. Dispatchers' fringe benefits	\$ _____
5. Fuel & Oil	\$ _____
6. Maintenance & repairs	\$ _____
7. Tires, parts, materials and supplies	\$ _____
8. Titles, fees, and licenses	\$ _____
9. Taxes	\$ _____
10. Vehicle and equipment leases and rentals	\$ _____
11. Vehicle Insurance	\$ _____
12. Staff and volunteer mileage reimbursements (same as question 20)	\$ _____
13. Client reimbursement	\$ _____
14. Purchased transportation (same as question 27)	\$ _____
15. Other – please specify _____	\$ _____
<b>Total Operating Expenses</b>	<b>\$ _____</b>



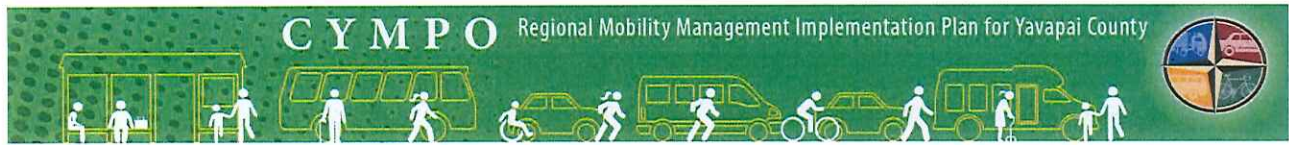
## Yavapai County Regional Mobility Management Implementation Plan



31. What are the funding sources for the expenses identified in 28 and 29? Please identify the major sources of funds for your agency's transportation services and the amount contributed by each in the past fiscal year. If the transportation is funded out of various agency programs, please list those programs and estimate the approximate amount attributable to client transportation in each.

<u>Used</u>	<u>Assistance Program</u>	<u>Amount of Funding</u>
		<u>for Client</u>
<u>Transportation</u>		
<u>Federal/State:</u>	Developmental Disabilities	\$ _____
	Community Services Block Grant	\$ _____
	Adult Day Care	\$ _____
	Head Start	\$ _____
	Mental/Behavioral Health	\$ _____
	Section 5310	\$ _____
	Section 5311	\$ _____
	TANF	\$ _____
	Title III B – Older Americans Act	\$ _____
	Veteran's services	\$ _____
	Medicaid (AHCCCS)	\$ _____
	Medicaid (ALTCS)	\$ _____
	Vocational Rehabilitation	\$ _____
	WorkForce Investment Opportunity Act	\$ _____
	Title XX (Social Services Block Grant)	\$ _____
	Other – please specify: _____	\$ _____
	Other – please specify: _____	\$ _____
	Other – please specify: _____	\$ _____
	<b>Total Federal/State Funds</b>	\$ _____
<u>Local:</u>	City/Town – please specify: _____	\$ _____
	County	\$ _____
	Another County – please specify: _____	\$ _____
	Client Fees	\$ _____
	Contracted Service (same as question 26)	\$ _____
	Donations/Contributions (same as question 25)	\$ _____
	Fares (same as question 25)	\$ _____
	United Way	\$ _____
	Workshop Revenue	\$ _____
	Other – please specify: _____	\$ _____
	Other – please specify: _____	\$ _____
	<b>Total Local Funds</b>	\$ _____





#### D. Future Transportation Options

32. Are you having any problems with your current method of getting clients/passengers to your site or service? \_\_\_ Yes \_\_\_ No

If YES, please explain: \_\_\_\_\_

---

---

---

---

33. What plans do you have during the next five years to expand (or reduce) agency programs or services? What impacts will these changes have on your client transportation needs?

---

---

---

---

34. Would you like to see more coordination of client transportation among the various agencies in Yavapai County? \_\_\_ Yes \_\_\_ No

If YES, please indicate the agencies you would like to see involved: \_\_\_\_\_

---

---

---

35. What is the most important thing that could be done to improve transportation services for your clients?

---

---

---

---

36. What, if any, are the major obstacles or concerns you think should be addressed in attempting to improve client transportation services? \_\_\_\_\_

---

---

---

---







37. Please describe transportation needs, specific to your agency or community, that you feel are not being adequately met. Please be as specific as you can, identifying destinations or any special needs or requirements your clients or passengers may have.

---

---

---

38. Please indicate below areas of your *potential interest* in becoming involved in improving transportation services through better coordination of the services and resources that are available today and can be available in the future (Please check all that apply):

- ☐ Joining a network of agencies that coordinates transportation services to better meet travel needs.
- ☐ Pooling of financial resources you budget for transportation services to better coordinate services.
- ☐ Joint use, pooling, or sharing of vehicles among agencies.
- ☐ Purchasing of vehicles cooperatively.
- ☐ Centralized fueling of vehicles.
- ☐ Centralized maintenance services for vehicles.
- ☐ Centralized scheduling of your passenger trips with other agency trip scheduling.
- ☐ Centralized operation of vehicles for your passenger trips and other agency trips.
- ☐ Contracting to purchase transportation service rather than continuing to operate it.
- ☐ Contracting to provide transportation service to other agencies needing service.

34. Are there any obstacles or barriers that would hinder your agency's ability to work or coordinate with other agencies in regards to transportation?? ☐ Yes ☐ No

If YES, please indicate the agencies you would like to see involved: \_\_\_\_\_

---

---

---

---

40. Please add any comments you may have in the space below.

---

---

---

---

---

*Thank you very much for your time and thoughtfulness. We greatly appreciate your assistance. The input you provided is very important. Please return this survey to TransitPlus, PO Box 637, Elizabeth, CO 80107 or by email to [Michael.Koch@transitplus.biz](mailto:Michael.Koch@transitplus.biz)*

*If you need assistance in completing this survey, please contact Michael Koch, TransitPlus, at 775-682-1649 or at the e-mail address above.*



## Summary of Comments

Question #	Other Response or Narrative Comment
1	Government Agency
6	University
8	Day Treatment & Training Program for adults with intellectual disabilities
8	Foster Care
8	Age, for rides under NACOG monies. Disability for some programs.
8	Transitional Care Services; Home Support Services; Medial Alert Systems, One-Call Center
8	Food deliveries and referrals to other agencies financial aid
8	Eligibility: Ability to access food / prepare food
9	Age eligibility: Must be 18 years or older
9	Disability Eligibility: Adults with developmental disabilities
9	Disability: Developmental Disability
9	Other: Foster Care Candidate
9	For Senior Corps Programs, volunteers must be 55 or older and the Senior Companion Program requires volunteers to earn less than 200% of the Federal Poverty level to earn a stipend. Senior Companion volunteers are matched with homebound elderly clients who are referred to us through our partner agencies.
9	Age eligibility: Must be 17.5 years or older
9	Disability Eligibility: A developmental disability assessment
9	Must be a veteran
9	Age eligibility: Must be an adult
9	Disabled, or health conditions that prevent driving, or advanced age
9	Must meet certain income requirements
9	Eligibility: Must be an eligible veteran
10	We also serve a very small portion of Coconino
10	Cities/Towns: Cottonwood, Clarkdale, Verde Villages, Bridgeport, Sedona
10	Demand Service in Village of Oak Creek, Cornville, Camp Verde
10	We operate to/from Prescott & Prescott Valley AND to/from Dewey-Humbolt
10	We can serve all of Yavapai County however services are provided where the current corps of volunteers resides which include Prescott, Prescott Valley, Chino Valley, Sedona and Cottonwood. As new volunteers are recruited in additional communities the service area can change slightly.
10	We also serve communities in Coconino, Maricopa, Mohave and Navajo Counties.
10	Counties - Apache, Coconino, Cochise, Pima, Pinal, Gila, Mohave, La Paz, Yuma, Yavapai, Navajo
10	Cities/Towns - All cities in geographic areas within 35 miles of wellness centers
10	Northern Arizona
10	Flagstaff to Phoenix, Prescott to Payson
10	Cities/Towns: Quad cities, Cottonwood, and Kingman
10	Cities/Towns - Cottonwood, Clarkdale, Jerome, Sedona, Village of Oak Creek, Camp Verde, Rimrock, Lake Montezuma
10	Other - All rural areas in the greater Verde Valley
11	Special exceptions are made for pre-planned and approved weekend outings
11	11 - VTS or DAV
11	VIA brings them if possible and many walk to and from the center. Again if you do not live in Prescott than you must drive or get a ride.
11	Walk, bike



## Yavapai County Regional Mobility Management Implementation Plan

Question #	Other Response or Narrative Comment
13	Demand Response: Sedona to Camp Verde and most points in-between. Most of the Verde Valley on demand service
13	Flagstaff to Phoenix, Prescott to Payson all starting from the ranch in Camp Verde
13	all points within the Verde Valley, trips to Flagstaff, Prescott and Phoenix Metro Area
13	Tri-City Area
14	Clients traveling out of the service areas for their own pleasure (i.e. family visits, vacation) must make arrangements with family members for transportation or make arrangements with their case worker to have a rental car and staff to transport them at their own expense.
14	Clients are developmentally disabled and need one-on-one staffing, help in ambulating with and without a walker, and are incapable of travel planning
14	Medical necessity
14	The VA drivers can't or are not authorized to enter patients homes, we are door to door or curb to curb only
14	Pleasure trips are limited (going to movies, concert, etc.) when volunteer drivers are already booked
15	Clients served are adults with developmental disabilities. Most have multiple handicapping conditions ranging from mild to severe. Many utilize wheelchairs and walkers for mobility. Some have behavioral issues. A few clients also require portable oxygen. Some clients are their own guardian and independent enough to travel on their own; however, the majority of clients served are fragile and vulnerable. They require assistance.
15	34 Unduplicated clients
15	Each client who receives transportation may have specific needs however if it something that can't easily be addressed by the Senior Companion, the Senior Companion contacts the Program Coordinator for guidance. We take into account special needs of clients as part of the matching process.
15	Mental health crisis and triggers. Severe or serious mental illness.
15	We provide NEMT. We transport both Ambulatory & Wheelchair riders. We also transport special needs (DDD) passengers. Sometimes, but rarely a caregiver or aid will ride along.
15	Limited Wheel Chair Service
15	Caregivers (caseworkers) need to travel with ranchers (clients). Caregivers go through a specific training course before entering the work environment. Ranchers can not travel alone.
15	Door through door service, standby assistance for ingress & egress, accompaniment to medical appointments, assistance while shopping, carrying and loading and unloading bags, volunteer provide ride-along assistance when we book rides with other transit services for special needs riders
15	We take everyone. Some have care givers that accompanies them
16	PASS Training, Defensive Driving Training
16	PASS, Defensive Driving PASS is given by PASS certified trainers at our location and open to any drivers in our region who desire to attend. Length of training is usually one day, with a test given at the end and certificates issued from the CTAA office in Washington, D.C. We also do First Aid/CPR training for our drivers and this is given by the Red Cross Certified trainers at the Cottonwood Recreation Center, usually given in our offices. Certificates are issued at the Red Cross.
16	The course is titled "Driver Training" and comprises safety and defensive driving, including a road test, road safety, general maintenance and wheelchair lift operation information. The course is taught by Hozhoni's Staff Developer or Asset Manager. Direct Care Staff who drive must present a current 3 year MVD record upon acceptance of a position with Hozhoni and it must be an "acceptable" driving record.
16	Our staff provide a defensive driver program and test as well as a review of our internal Volunteer Driver Handbook.
16	HCS Commercial Driving and Defensive Driving - 4 hours, TGB client transport services for customer service - 4 hours
16	Article 9, 4 hours, with DDD certified trainers. Basic First Aid, CPR/AED, 1 day, with certified trainers. Defensive Driving, 1 day, ADOT certified Instructors. Passenger Service and Safety (PASS) Certified Driver Program, 1 day, ADOT certified instructors. Level one background clearance check.



# Yavapai County Regional Mobility Management Implementation Plan

Question #	Other Response or Narrative Comment
16	CPR, First Aid, PASS, Cultural Diversity, Road Test, Defensive Driving and Safety Course. All Courses in-house w/certification
16	We do multiple in service trainings throughout the year, each year at our monthly all staff mtgs. These trainings are provided by our Rainbow Staff, and/or insurance provider. All our current vehicles can be driven with a class D license.
16	PASS, provided by certified staff trainer. Driver orientation and handbook review provided by staff trainer
16	PASS Class 8 hours (Certification) Defensive Driving (Certification) - Hours First Aid & CPR 4-6 hours
18	AZ DOT
18	Own garage
18	Private garage: Cottonwood Truck & Auto, Wessie's Customs
18	In-house: On-site auto maintenance facility
20	Direct support staff assist adults with disabilities (clients) with daily living, work and life activities in residential, work, and day program facilities.
20	Provide direct psycho-social rehabilitation
20	Dispatcher/Scheduler. Supervisor, back up driver and also back up Dispatcher/Scheduler.
20	Caregivers (~30, the drop down box above only goes to 9) do the majority of the driving for our transportation needs. We do have some volunteers who provide support and we do have some staff (non-caregivers) that provide daily/weekly transportation support.
20	Contracted transit providers only
20	Transit Manager (Part Time), Dispatcher (Part Time), Admin Support (Part Time)
27	\$2.00 regular fare, for persons 60+ \$1.00 fare
28	Utilized Camp Verde School to provide school bus for annual Christmas shopping Trip. Flat fee ~\$300
29	Total Amount of Fringe Benefits for Admin Personnel
30	Other: Other Category includes salary for Supervisors (\$90,000), Uniforms (\$4,000), and Operating Supplies (\$15,000)
31	Foundations
31	Total of \$69,898 in "Other funding sources": \$45,503 (ADOT Software Grant), \$3,363 (DES/CPS), \$21,032 (not disclosed in survey)
31	Total of \$5,663 in "Other Local revenues"
31	City/Town: Sedona
31	Local-other: Private Foundations - \$45,000
31	Local-other: Northern Arizona Healthcare - \$50,000
31	Tribal Grant \$10,000
38	Volunteer driver training
13a	Center directors during intake process
13a	VVCC Call Takers
13a	Wellness Center Manager, Hospital Social Workers, Detox Residential Managers

## **EXHIBIT 2 OF APPENDIX A: VEHICLE ROSTER**

The combined vehicle rosters are provided for reference. The NACOG mobility manager maintains and updates copies of providers vehicle rosters.



Last 4 digits of VIN	Vehicle Location	Primary Fund Source	Year	Make	Model	Mileage	Date Mileage Recorded (Mo-Yr)	# of Ambulatory Seats	Lift or Ramp?	# of W/C Seats	Condition Code	Anticipated Replacement Year (100,000)	Is Vehicle On ADOT Lien?
ADULT DAY CARE SERVICES													
8308	Prescott	5310	2005	Ford	Cutaway Van	89,219	Aug-15	10	Lift	2	2	2015	No
5221	Prescott	5310	2015	Ford	Cutaway Van	2,903	Aug-15	9	Lift	2	5		Yes
1406	Prescott	5310	2011	Ford	Cutaway Van	85,754	Aug-15	9	Lift	2	4	2021	Yes
2532	Prescott	5310	2009	Ford	Cutaway Van	109,870	Aug-15	9	Lift	2	3	2019	Yes
3331	Prescott	5310	2003	Ford	Cutaway Van	92,865	Aug-15	10	Lift	2	2	2016	No
3333	Cottonwood	5310	2003	Ford	Cutaway	117,947	Aug-15	10	Lift	2	2	2015	No
1952	Cottonwood	5310	2012	Ford	MaxiVan	37,211	Aug-15	9	Lift	1	4	2022	Yes
2913	Cottonwood	5310	2012	Ford	Cutaway	46,262	Aug-15	9	Lift	2	4	2022	Yes
8307	Cottonwood	Agency Purchase	2005	Ford	Cutaway	48,826	Aug-15	10	Lift	2	3	2016	No
5219	Cottonwood	5310	2015	Ford	Cutaway	885	Aug-15	9	Lift	2	5		Yes
5220	Cottonwood	5310	2015	Ford	Cutaway	2,330	Aug-15	9	Lift	2	5		Yes
5334	Cottonwood	5310	2006	Chevy	Mini-Van	68,136	Aug-15	5	None	0	3	2016	No
5185	Prescott Valley	5310	2008	Ford	Cutaway	71,540	Aug-15	9	Lift	2	3	2015	No
2534	Prescott Valley	5310	2009	Ford	Cutaway	79,357	Aug-15	9	Lift	2	3	2019	Yes
2404	Prescott Valley	5310	2010	Ford	Cutaway	115,314	Aug-15	9	Lift	2	4	2020	No
7520	Prescott Valley	5310	2013	Ford	Supreme	22,720	Aug-15	9	Lift	2	4	2023	Yes
2848	Prescott Valley	5310	2015	Ford	StarCraft	14,628	Aug-15	9	Lift	2	5	2024	Yes
5222	Prescott Valley	5310	2015	Ford	StarCraft	2,694	Aug-15	9	Lift	2	5		Yes
7522	Prescott	5310	2013	Ford	Cutaway	8,250	Aug-15	9	Lift	2	5	2023	Yes
BEAVER CREEK TRANSIT													
792	Lake Montezuma	Donation	2010	Ford	Supreme	108,979	Jun-16	8	Lift	2	4	2018	N
4293	Lake Montezuma	Donation	2000	Dodge	Stratus	83,270	Jun-16	4	No		4	2017	N

DISABLED AMERICAN VETERANS



# Yavapai County Regional Mobility Management Implementation Plan

Last 4 digits of VIN	Vehicle Location	Primary Fund Source	Year	Make	Model	Mileage	Date Mileage Recorded (Mo-Yr)	# of Ambulatory Seats	Lift or Ramp?	# of W/C Seats	Condition Code	Anticipated Replacement Year (100,000)	Is Vehicle On ADOT Lien?
DAV	Cottonwood	Agency Purchase					Jun-16		None	0			No
DAV	Cottonwood	Agency Purchase					Jun-16		None	0			No
MAYER SENIOR CENTER													
9489	Mayer, AZ		2004	Ford	ITNV	120,075	Aug-16	9	Lift	1	3		No
NAZCARE													
1246	Prescott, AZ	Agency Purchase	2003	Nissan	Sentra	183,566	Aug-16	5	None	0	3		No
8664	Prescott, AZ	Agency Purchase	2006	GMC	Savana	139,348	Aug-16	7	None	0	3		No
5993	Prescott, AZ	Agency Purchase	1992	Toyota	Paseo	241,608	Aug-16	5	None	0	2		No
3457	Prescott, AZ	5310	2013	Dodge	Caravan	30,237	Aug-16	7	None	0	4		Yes
4744	Prescott, AZ	Agency Purchase	2009	Hyundai	Accent	63,634	Aug-16	5	None	0	3		No
7898	Eagar, AZ	Agency Purchase	2012	Dodge	Grand Caravan	59,684	Aug-16	7	None	0	4		No
1600	Eagar, AZ	Agency Purchase	2007	Chevy	Express 1600	135,332	Aug-16	7	None	0	2		No
4432	Cottonwood, AZ	Agency Purchase	2007	Toyota	Corolla	176,581	Aug-16	5	None	0	3		No
1178	Cottonwood, AZ	Agency Purchase	2006	Ford	Econoline	95,217	Aug-16	7	None	0	3		No
9467	Show Low, AZ	Agency Purchase	2001	Nissan	Sentra	230,035	Aug-16	5	None	0	2		No
6921	Show Low, AZ	Agency Purchase	2000	Toyota	Rav 4	159,399	Aug-16	5	None	0	3		No
6881	Show Low, AZ	5310	2015	Chevy	Van	1,974	Aug-16	12	None	0	5		Yes
6334	Flagstaff, AZ	Agency Purchase	2001	Dodge	Caravan	96,126	Aug-16	7	None	0	2		No
NEW HORIZONS													
8172	Prescott Valley	5310	2014	Ford	Starcraft	15,648	Aug-16	9	Lift	2	4	2019	Yes
449	Prescott Valley	5310	2006	Ford		114,186	Aug-16	9	Lift	2	3	2016	No
9503	Prescott Valley	5310	2015	Dodge	Caravan	12,908	Aug-16	6	None	0	3	2016	Yes
6597	Prescott Valley	Agency Purchase	2003	Toyota	Matrix	197,544	Aug-16	4	None	0	3	2017	No
8648	Prescott Valley	5310	2013	Ford	Titan Conn	72,301	Aug-16	4	None	0	4	2017	Yes



# Yavapai County Regional Mobility Management Implementation Plan

Last 4 digits of VIN	Vehicle Location	Primary Fund Source	Year	Make	Model	Mileage	Date Mileage Recorded (Mo-Yr)	# of Ambulatory Seats	Lift or Ramp?	# of W/C Seats	Condition Code	Anticipated Replacement Year (100,000)	Is Vehicle On ADOT Lien?
2533	Prescott Valley	5310	2009	Ford		138,227	Aug-16	9	Lift	2	3	2017	No
2939	Prescott Valley	5310	2015	Dodge	Caravan	12,644	Aug-16	6	None	0	5	2021	Yes
1329	Prescott Valley	5310	2012	Dodge	El Dorado	104,302	Aug-16	6	Ramp	1	3	2017	No
1414	Prescott Valley	5310	2011	Ford		67,305	Aug-16	9	Lift	2	3	2018	Yes
6592	Prescott Valley	5310	2012	Dodge	Eldorado	95,146	Aug-16	6	Ramp	1	3	2017	No
5365	Prescott Valley	5310	2012	Ford	Supreme	71,151	Aug-16	9	Lift	2	3	2018	Yes
8649	Prescott Valley	5310	2013	Ford	Tran Conn	52,674	Aug-16	4	None	0	4	2017	Yes
8650	Prescott Valley	5310	2013	Ford	Tran Conn	54,222	Aug-16	4	None	0	4	2017	Yes
RAINBOW ACRES													
9561	Camp Verde	5310	2007	Chev	3500	118,300	Aug-16	8	None	0	3	2015	N
8620	Camp Verde	5310	2007	Chev	3500	91,900	Aug-16	8	None	0	2	2016	N
2622	Camp Verde	5310	2007	Ford	E350	69,600	Aug-16	5	Lift	1	2	2020	N
6082	Camp Verde	5310	2008	Ford	E350	82,900	Aug-16	12	None	0	2	2017	N
6499	Camp Verde	5310	2008	Chev	Uplander	113,700	Aug-16	7	None	0	3	2015	N
6083	Camp Verde	5310	2008	Ford	E350	77,200	Aug-16	12	None	0	2	2018	N
897	Camp Verde	5310	2012	Toyota	Sienna	72,000	Aug-16	7	None	0	1	2016	Y
1016	Camp Verde	5310	2012	Toyota	Sienna	70,200	Aug-16	7	None	0	1	2016	Y
6591	Camp Verde	5310	2012	Chry	Caravan	30,900	Aug-16	7	Ramp	2	1	2024	Y
3733	Camp Verde	5310	2012	Chry	Caravan	46,200	Aug-16	7	None	0	1	2022	Y
RUSTY'S MORNINGSTAR RANCH													
20686	Cornville	Agency Purchase	1998	Dodge	Cardinal	112,871	Sep-15	15	None	0	3		No
6053	Cornville	Agency Purchase	2005	Dodge	Caravan	144,837	Sep-15	7	None	0	3		No
7818	Cornville	Donation		Dodge	Caravan	152,108	Apr-16	7	None	0	3		No
VETERAN'S TRANSPORTATION SERVICES													
5081	Prescott		2001	Chev	4500	50,000	Sep-16	9	Lift	2	4		

# Yavapai County Regional Mobility Management Implementation Plan

Last 4 digits of VIN	Vehicle Location	Primary Fund Source	Year	Make	Model	Mileage	Date Mileage Recorded (Mo-Yr)	# of Ambulatory Seats	Lift or Ramp?	# of W/C Seats	Condition Code	Anticipated Replacement Year (100,000)	Is Vehicle On ADOT Lien?
4591	Prescott		2011	Chevy	4500	76,800	Sep-16	9	Lift	2	4		
0102	Prescott		2012	Chevy	33503	40,316	Sep-16	9	Lift	2	4		
0502	Prescott		2012	Chevy	33503	60,836	Sep-16	8	Lift	2	4		
0400	Kingman		2012	Chevy	33503	76,000	Sep-16	8	Lift	2	4		
YAVAPAI APACHE NATION													
6931	Yavapai-Apache Nation	5310	2010	Ford	Supreme	54,161	Jun-16	13	Lift	2		2018	Y
1407	Yavapai-Apache Nation	5310	2011	Ford	Supreme	57,000	Jun-16	13	Lift	2		2018	Y
3722	Yavapai-Apache Nation	5310	2012	Dodge	Caravan	42,833	Jun-16	7	No	0		2020	Y