

CYMPO

Metropolitan Transportation Improvement Program



**FY 2020 -
FY 2024**



CYMPO

Central Yavapai Metropolitan
Planning Organization

Christopher Bridges

Administrator

1971 Commerce Center Circle Suite E
Prescott, AZ 86301

Phone: 928-442-5730

Email: Christopher.Bridges@yavapai.us

Web: www.cympo.org

Adopted April 30, 2019



Metropolitan Transportation Improvement Program
FY 2020 through FY 2024

1971 Commerce Center Circle Suite E
Prescott, AZ 86301

Phone: 928-442-5730

Web: <http://www.cympo.org>



Central Yavapai Metropolitan Planning Organization

The CYMPO Executive Board consists of six elected or appointed officials from the City of Prescott, the Towns of Chino Valley, Dewey-Humboldt and Prescott Valley, Yavapai County and one member from ADOT. It is the function of the Executive Board to act as a policy body, coordinating transportation planning and related implementation activities within the metropolitan area. The Board approves all agreements and contracts and the Chair, or designee, signs all appropriate documents related to contracts and agreements of CYMPO.

The CYMPO Technical Advisory Committee (TAC) is composed of technical and/or managerial staff representatives of the City of Prescott, the Towns of Chino Valley, Dewey-Humboldt and Prescott Valley, and Yavapai County. In addition to the five jurisdictions, ADOT Northwest District Office and Multimodal Planning Division are voting members of the TAC, as is the U.S.D.A. Forest Service. The primary responsibility of the TAC is to conduct technical reviews and analysis regarding project related activity of the Metropolitan Transportation Improvement Program (MTIP) and the Unified Planning Work Program (UPWP), and other issues as specified by CYMPO's Executive Board. After technical reviews and analysis are performed by the TAC, recommendations are presented to the Executive Board.

The CYMPO Ecosystem Connectivity and Mitigation Advisory Committee (EMAC) is composed of seven voting members from ADOT Northwest District Environmental, Arizona Game & Fish, Yavapai County Land Use Planning Staff, Prescott National Forest, and three private citizens who reside within the CYMPO planning boundary. The mission of the EMAC is to study and advocate for the preservation of interconnected ecosystems in the CYMPO Region that will integrate land use and mitigation for natural resource protection and wildlife habitats into the regional transportation planning and design program.

Table of Contents

Chapter 1	Introduction	4
	Vision	
	Mission	
	Regional Profile	5
	Quick Stats	6
	Funding and Budget	7
Chapter 2	MTIP Process and Public Involvement	10
	Schedule	
	Project Submittal	
	Fiscal Constraint	
	Technical Committee Review	
	Public Review and Public Comment Period	
	Final Approval	
Chapter 3	Transit Projects	12
	ADOT Section 5304/5310/5311 Grants	
Tables	Table 1 – State and Federal Funded Projects FY20 – 24	
	Table 2 – Operations and Maintenance – Local Jurisdiction Funded Projects	
	Table 3 – Transit Projects	
	Table 4 – STBG Obligated and Programmed Projects	
	Table 6 – STBG Future Projects	
	Table 7 – Key	
Chapter 4	Performance Measures	13



CHAPTER 1

Introduction

The Central Yavapai Metropolitan Planning Organization (CYMPO) is the designated Metropolitan Planning Organization (MPO) for the City of Prescott, the Towns of Chino Valley, Dewey-Humboldt and Prescott Valley, Yavapai County and Arizona Department of Transportation. As the regional MPO, CYMPO provides the forum for local elected officials and transportation experts to plan multimodal infrastructure within the CYMPO Planning Boundary area.

The CYMPO Executive Board provides for an inclusive, deliberative process that considers the needs, financial resources and perspectives of all stakeholders. The Board structure also creates a regional forum for single jurisdictions to come together and work toward common goals.

CYMPO committees include, but are not limited to: Technical Advisory Committee and Ecosystem Connectivity Mitigation Advisory Committee which provide technical and advisory support to the Executive Board.

VISION

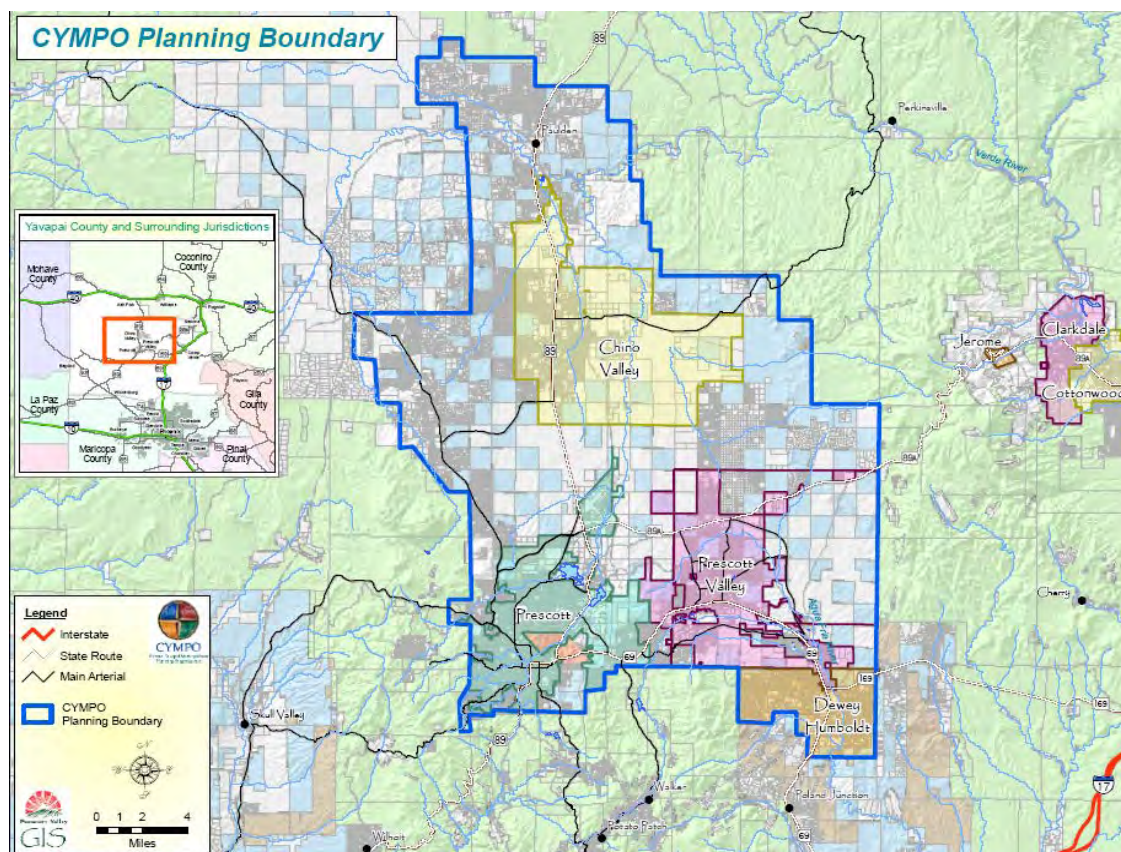
To promote and maintain a regional coordinated transportation system for the safe and efficient movement of people, goods, and services.

MISSION

To use regional leadership in planning and promoting a comprehensive multimodal transportation system.

REGIONAL PROFILE

The Prescott Urbanized Area is located in central Arizona in the central basin area of Yavapai County. Yavapai County totals approximately 8,125 square miles, which is about the same size as the state of New Jersey and is much larger than each of the states of Connecticut, Delaware, and Rhode Island. Of the 8,125 square miles in Yavapai County, approximately 435 square miles are encompassed within the CYMPO planning boundary.





Yavapai County has seen a significant increase in population since 1970, with the County's population growing from a total of 37,005 in 1970 to 167,517 people according to the 2000 US Census. This population growth has continued by expanding to the 2010 US Census total of 211,033 people in Yavapai County.

This substantial growth is expected to continue in the long term as development pressures approach from the Phoenix metropolitan area and as the overall popularity of the Prescott region continues to increase. Additionally, the central location of the Prescott region within the state of Arizona, the amount of vacant private land, and the moderate climate, makes Yavapai County a desirable place to live, work, and retire.

QUICK STATS

2000 Census

- CYMPO Planning Boundary population - 91,000
 - Prescott 33,938
 - Prescott Valley 23,535
 - Chino 7,835
 - Yavapai County 25,692

2010 Census

- CYMPO Planning Boundary population – 122,715
 - Prescott 39,843
 - Prescott Valley 38,822
 - Chino Valley 10,817
 - Yavapai County 29,339
 - Dewey-Humboldt 3,894



FUNDING AND BUDGET SUMMARY

CYMPO, as well as any other MPO in the country, is dependent on federal funding for operation of the MPO and to perform planning activities that are used to deliver a variety of projects for the region. Even though the amount of funding that CYMPO receives is relatively small when compared to the big picture of funding across the country, our region has been extremely successful in coordinating to deliver much needed projects for our community. Below is a detail of the types of funding CYMPO receives and what each funding type is used for.

Metropolitan Planning Funds (PL) - Statewide Planning & Research Funds (SPR)

PL funds have a required 5.7% match provided by local governments. The distribution of the PL Funds is accomplished through a formula developed by ADOT in consultation with the MPOs and must be approved by the FHWA.

SPR funds are federal dollars from the State Planning and Research Program administered by ADOT. Some SPR funds may be allocated to the MPO to help plan for the non-urbanized portion of the MPO. A 20% match is required and must be provided by the local jurisdiction, depending on the project.

The table below indicates the estimated funding the MPO anticipates to receive from these sources in the FY 2019.

Total Estimated PL Funding for FY 2020	\$ 120,500
Total Estimated SPR Funding for FY 2020	\$ 125,000



Federal Transit Administration Planning Funding (Section 5305d)

FTA funds are secured annually through the FTA Metropolitan Planning Program Section 5305d. FTA funds are designated for transit planning and research activities. The funds require a 20% local match, which is provided by the local governments in hard dollars or In-kind.

It is anticipated that Section 5305d transit funds will be used for transit planning purposes in the Central Yavapai region. Use of Section 5305d funds is for planning, technical studies, and coordinated mobility management.

Total Estimated 5305d Funding for FY 2020	\$ 55,719
---	------------------

Federal Transit Administration Mobility Management Funding (Section 5310)

FTA section 5310 funds are secured bi-annually through an ADOT Administered Grant for mobility management activities. These funds have not been used in the past and do come with specific contractually required mobility management related duties, scope of work and reporting to ADOT. These funds require a 20% local match, which is provided by the local governments in hard dollars or In-kind.

It is anticipated that Section 5310 mobility management funds will be used for fully funding all mobility management planning and implementation of regional mobility projects in the Central Yavapai region and in partnership with NACOG in the balance of Yavapai County.

Total Estimated 5310 Funding for FY 2020	\$ 90,000
--	------------------



Surface Transportation Program Block Grant Funds (STBG)

STBG is a federal-aid highway flexible funding program that funds a broad range of surface transportation capital needs including roads, transit, airport access, vanpool, and bicycle and pedestrian facilities. Transit and other related planning, research, and development activities are also eligible uses of STBG funds. In the past, CYMPO has programmed STBG funds for primarily construction projects and has delivered every project that has been programmed with this type of funding since the inception of CYMPO. Moving Forward, CYMPO is transitioning STBG funds into Regional Transportation Studies, safety and education campaigns, local Highway-User Revenue Fund (HURF) exchange projects, and administrative and operational costs. The funds require a 5.7% local match, which is provided by the local governments in hard dollars or In-kind.

Total Estimated STBG Funding Annually	\$ 650,000
---------------------------------------	-------------------



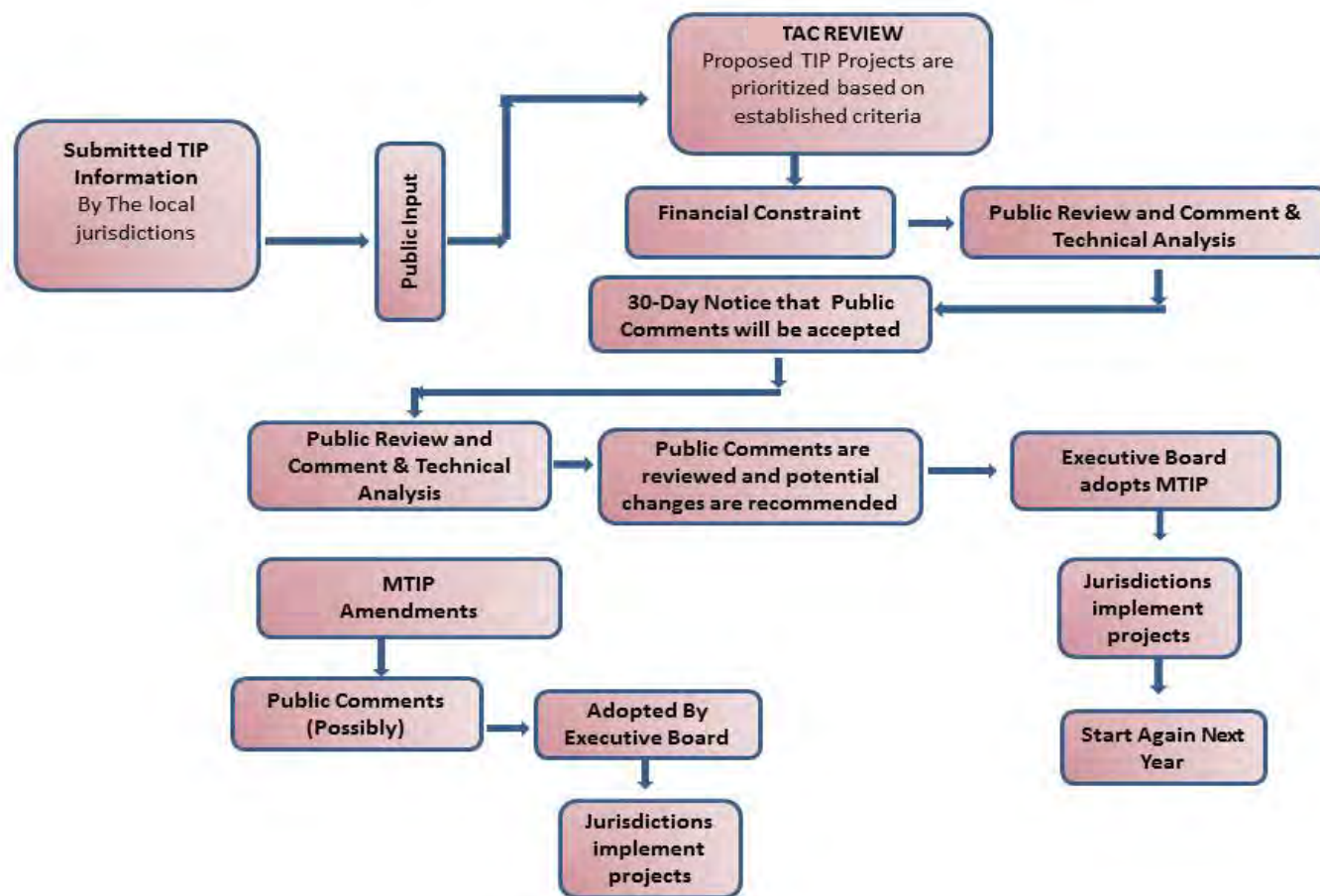
CHAPTER 2

MTIP Process and Public Involvement

The Central Yavapai Metropolitan Planning Organization (CYMPO) updates the MTIP on a regular basis and in doing so strives to include as much public input as possible. Annually, the CYMPO local jurisdictions submit projects for inclusion into the MTIP. These projects are reviewed in a public meeting by the Technical Advisory Committee (TAC). The first four years of projects listed are required to be fiscally constrained.

CYMPO staff makes requested changes to the MTIP which is reviewed by the TAC in a public meeting. Should draft MTIP require additional changes, those changes are included in the draft MTIP submitted to the Executive Board for additional public comment and review. The final draft is submitted to the TAC for final recommendation, and then back to the Executive Board for final approval. The draft document is made available on the CYMPO website, as well as the CYMPO office.

CYMPO and the member jurisdictions follow the adopted and ADOT approved Title VI plan to help ensure the greatest amount of public participation possible during the MTIP development and public involvement process.



CHAPTER 3

Transit Projects

CYMPO staff, together with representatives from local human services organizations have formed a committee called the Local Coordinating Committee (LCC). The group meets on a regular basis to discuss ways to best coordinate transit services within the CYMPO region. Through the LCC, CYMPO assists local human services providers with transportation related coordination and technical assistance. These types of providers are eligible to receive Section 5310 and 5311 funding in the form of grants through ADOT.

Partnerships:

- 1) CYMPO is partnering with the Maricopa Association of Governments (MAG) under a grant application from the Weinberg Foundation to create a rural transportation incubator to provide new and strengthen existing transportation services for elderly/disabled populations in need of transportation. CYMPO will contribute \$50,000 per year for a total of two years towards this project utilizing the 5310 grant awards.
- 2) CYMPO is partnering with NACOG to perform joint Mobility Management activities across all of Yavapai County. Through an intergovernmental agreement (IGA) CYMPO will contribute \$40,000 to fund a new mobility management staff position at NACOG for a total of two years. This new position will be responsible for coordinating mobility management activities in both CYMPO/Western Yavapai County and the Verde Valley to promote an increased level of coordination including implementing projects as recommended in the 2017 Regional Mobility Management Plan.
- 3) CYMPO has entered into an agreement with Northern Arizona Intergovernmental Public Transportation Authority (NAIPTA) to perform a Transit Implementation Plan Update. NAIPTA will serve as the fiduciary agent, and Nelson/Nygaard has been selected to conduct the Plan. The update will include evaluation of the financial data from the 2009 plan, provide current cost estimates, and evaluate public private partnership, governance, and sustainable funding opportunities.

CHAPTER 4

Performance Measures

STIP

NHS Travel Time Reliability

CYMPO has adopted the Arizona Department of Transportation’s performance measures detailed below:

NHS Travel Time Reliability identifies the percent of person-miles on the Interstate and the non-Interstate NHS that are reliable. Two and four year targets are required for the Interstate and a four year target is required for the non-Interstate NHS. The NHS Travel Time Reliability targets established for the 2018 – 2021 performance period are:

- **Interstate**
 - **86.0% (2-year)**
 - **85.8% (4-year)**
- **Non-Interstate NHS**
 - **74.9% (4-year)**

The targets are data-driven and realistic; and intended to keep CYMPO and ADOT focused on improving travel time reliability on the NHS. The following types of projects were included in the FY2019 – 2023 STIP to support improved travel time reliability:

- Design and construct Freeway Management System including the installation of Intelligent Transportation Systems such as signals, adaptive ramp meters, connected and automated vehicle equipment, dynamic message signs, CCTV cameras, EVP networking, bike detection and improved signs
- Procurement of travel time data to aid in freeway management
- Roadway widening including the design or construction of general purpose and HOV lanes
- Traffic Incident support and Freeway Service Patrols
- Design and construction of roundabouts
- Design and construction of new roadway
- Intersection improvements

STIP
Safety Performance Targets
11/5/18

CYMPO has adopted the Arizona Department of Transportation's safety performance targets detailed below:

On July 31, 2018, the Arizona Department of Transportation (ADOT) formally established safety targets for the state of Arizona for 2019, and CYMPO has subsequently adopted these measures. The safety performance measures and targets are based on five-year rolling averages for each metric.

- Number of fatalities – 1001.5 – 5% increase
- Rate of fatalities – 1.442 – 2% increase
- Number of serious injuries – 4166.9 -- 1% decrease
- Rate of serious injuries – 6.022 -- 4% decrease
- Number of non-motorized fatalities and serious injuries – 813.9 – 3% increase

The safety targets set by ADOT are data-driven and realistic; and intended to keep CYMPO and ADOT focused on improving safety while still striving for the goal of the State Strategic Highway Safety Plan (SHSP) to reduce the number of fatalities and serious injury crashes in the state of Arizona.

The FY2019 – 2023 STIP contains the following types of projects that support the achievement of the established safety performance targets:

- Installation of speed feedback signs including solar LED enhanced speed limit signs
- Design and construction of positive offset improvements including left-turn offsets
- Design and installation of traffic signals and adaptive signal controls
- Intersection improvements including right/left turn lanes and enhanced lighting
- Construction of roundabouts
- Construction of concrete barriers and raised medians
- Shoulder widening
- Installation of rumble strips
- Installation of signs, including wrong way signs, striping and arrows
- Construction of a pedestrian bridge, sidewalks, crosswalks including in school zones, bike lanes and traffic calming features
- Distracted Driving Awareness

STIP Pavement and Bridge Performance

CYMPO has adopted the Arizona Department of Transportation's performance measures detailed below:

The pavement performance measures cover the Interstate and the non-Interstate NHS. CYMPO has adopted ADOT's pavement performance targets, which are described below:

- **Good condition Interstate pavements – 48% (4-year target)**
- **Poor condition Interstate pavements – 2% (4-year target)**
- **Good condition non-Interstate NHS pavements – 31% (2- and 4-year target)**
- **Poor condition non-Interstate NHS pavements – 6% (2- and 4-year target)**

These targets are data-driven and realistic; and intended to keep CYMPO and ADOT focused on maintaining pavements in a state of good repair. The FY2019 – 2023 STIP contains the following types of projects that will improve the condition of highway pavements:

- Pavement preservation including chip seals, fog coats, micro surface treatments and high friction surface treatments
- Pavement rehabilitation including mill and overlay projects
- Pavement reconstruction

CYMPO has adopted ADOT's performance target of maintaining the percentage of National Highway System (NHS) Bridges Classified as in Good Condition based on deck area: 2- and 4- year targets – 52%. Percent of NHS Bridges Classified in Poor Condition based on deck area: 2- and 4- year targets -4%.

STIP Freight Reliability

CYMPO has adopted the Arizona Department of Transportation's performance measures detailed below:

The truck travel time reliability measure applies to Interstate freeways. This measure utilizes the Truck Travel Time Reliability Index, a planning time index that may be used to schedule trip travel times. ADOT's performance targets for freight reliability are:

- **Freight reliability – 1.21 (2-year)**
- **Freight reliability – 1.23 (4-year)**

The freight reliability targets are data-driven and realistic; and intended to keep ADOT focused on improving freight movement on the Interstate freeways. The FY2019 - 2023 STIP includes *major projects to improve commutes and freight travel*.

Central Yavapai Metropolitan Planning Organization 2020 - 2024 MTIP

Federal Funded Projects (FY Funding Amount listed in 1,000's)

TIP ID: CY-DOT-13-22		County: Yavapai	Project Name: SR69 Safety and Capacity Improvements				
Location and Sponsor: Prescott/ CYMPO		Project Type: Surface Transportation					
Description: SR69 Safety and Capacity Improvements Prescott Canyon Dr to Prescott Lakes Pkwy		Lanes: 4 to 6 Lanes					
Mile Length: .8 of a mile							
Phase	Funding Source	FY20	FY21	FY22	FY23	FY24	
CON	STBG	\$ -	\$ 370	\$ -	\$ -	\$ -	
Total Programmed Funding		\$ -	\$ 370	\$ -	\$ -	\$ -	
TIP ID: CY-DOT-15-34		County: Yavapai	Project Name: SR 89 at Road 1 North Traffic Signal				
Location and Sponsor: Chino Valley/ADOT		Project Type: Surface Transportation					
Description: Construction Funding SR89 and Road 1 North Intersection Construct Traffic Signal		Lanes: 4					
Mile Length:							
Phase	Funding Source	FY20	FY21	FY22	FY23	FY24	
CON	STBG CYMPO	\$ 185			\$ -		
	STBG ADOT	\$ 885					
Total Programmed Funding		\$ 1,070	\$ -	\$ -	\$ -	\$ -	
TIP ID: CY-CY-19-01		County: Yavapai	Project Name: LTAP Training				
Location and Sponsor: CYMPO		Project Type: LTAP - Technical Training					
Description: Training for Local Public Agencies		Lanes: NA					
Mile Length:							
Phase	Funding Source	FY20	FY21	FY22	FY23	FY24	
LP	STBG	\$ 5.0	\$ 5.0	\$ 5.0	\$ 5.0	\$ 5.0	
	LM	\$ 0.3	\$ 0.3	\$ 0.3	\$ 0.3	\$ 0.3	
Total Programmed Funding		\$ 5.3	\$ 5.3	\$ 5.3	\$ 5.3	\$ 5.3	

Table 1 - FINAL - April 30, 2019

TIP ID: CY-MPO-19-04 **County:** Yavapai **Project Name:** CYMPO 2050 RTP Update

Location and Sponsor: CYMPO **Project Type:** Surface Transportation

Description: 2050 CYMPO Long Range Transportation Plan

Lanes: NA

Phase	Funding Source	FY20	FY21	FY22	FY23	FY24
PL	STBG	\$ 120		\$ -		\$ 230
	SPR	\$ 15				\$ 65
	LM	\$ 11	\$ -	\$ -	\$ -	\$ 30
Total Programmed Funding		\$ 146	\$ -	\$ -	\$ -	\$ 325

TIP ID: CY-MPO-19-05 **County:** Yavapai **Project Name:** SR69/ SR169 Project Assessment

Location and Sponsor: CYMPO **Project Type:** Surface Transportation

Description: SR69/ SR169 Project Assessment

Lanes: NA

Phase	Funding Source	FY20	FY21	FY22	FY23	FY24
PL	SPR	\$ 45	\$ -	\$ -	\$ -	\$ -
	LM	\$ 11	\$ -	\$ -	\$ -	\$ -
Total Programmed Funding		\$ 56	\$ -	\$ -	\$ -	\$ -

TIP ID: CY-MPO-19-05 **County:** Yavapai **Project Name:** SR89A/ Robert Road TI Project Assessment

Location and Sponsor: CYMPO **Project Type:** Surface Transportation

Description: SR89A/ Robert Road TI Project Assessment

Lanes: NA

Phase	Funding Source	FY20	FY21	FY22	FY23	FY24
PL	SPR	\$ 65	\$ -	\$ -	\$ -	\$ -
	LM	\$ 16	\$ -	\$ -	\$ -	\$ -
Total Programmed Funding		\$ 81	\$ -	\$ -	\$ -	\$ -

Table 1 - FINAL - April 30, 2019

TIP ID: CY-MPO-19-05 **County:** Yavapai **Project Name:** Regional Transportation Studies and Grant Assistance: TBD
Location and Sponsor: CYMPO **Project Type:** Surface Transportation
Description: Planning Studies Identified in the 2040/2045 RTP: TBD

		Lanes: NA				
Phase	Funding Source	FY20	FY21	FY22	FY23	FY24
PL	STBG	\$ -	\$ -	\$ 80	\$ 105	\$ -
PL	SPR	\$ -	\$ 125	\$ 125	\$ 125	\$ 60
	LM	\$ -	\$ 31	\$ 36	\$ 38	\$ 15
Total Programmed Funding		\$ -	\$ 156	\$ 241	\$ 268	\$ 75

TIP ID: CY-MPO-19-06 **County:** Yavapai **Project Name:** Regional Safety Campaign
Location and Sponsor: CYMPO **Project Type:** Surface Transportation
Description: On-Going Distracted Driving

		Lanes: 4				
Phase	Funding Source	FY20	FY21	FY22	FY23	FY24
PL	STBG	\$ 35	\$ 45	\$ 45	\$ 45	\$ 45
Payback to Sierra Vista MPO	STBG	\$ 10	\$ -			
	LM	\$ 2	\$ 3	\$ 3	\$ 3	\$ 3
Total Programmed Funding		\$ 47	\$ 48	\$ 48	\$ 48	\$ 48

TIP ID: CY-PRS-12-12 **County:** Yavapai **Project Name:** Lincoln School
Location and Sponsor: Prescott / PAT **Project Type:** Safe Routes to School
Description: Construct Sidewalks and Crosswalks Around the School

Mile Length:

Phase	Funding Source	FY20	FY21	FY22	FY23	FY24
CON	SRTS	\$ 375				
CON	LM	\$ 75				
Total Programmed Funding		\$ 450	\$ -	\$ -	\$ -	\$ -

Table 1 - FINAL - April 30, 2019

TIP ID: CY-MPO-20-01 **County:** Yavapai **Project Name:** Transportation Education/Public Outreach
Location and Sponsor: CYMPO **Project Type:** Surface Transportation
Description: Transportation Education/Public Outreach

		Lanes: 4				
Phase	Funding Source	FY20	FY21	FY22	FY23	FY24
PL	STBG	\$ 20	\$ 20	\$ 20	\$ 20	\$ 20
	LM	\$ 1	\$ 1	\$ 1	\$ 1	\$ 1
Total Programmed Funding		\$ 21	\$ 21	\$ 21	\$ 21	\$ 21

TIP ID: CY-MPO-20-02 **County:** Yavapai **Project Name:** CYMPO Administration/Operation
Location and Sponsor: CYMPO **Project Type:** Surface Transportation
Description: CYMPO Administration/Operation

		Lanes: 4				
Phase	Funding Source	FY20	FY21	FY22	FY23	FY24
PL	STBG	\$ 205	\$ 210	\$ 225	\$ 225	\$ 225
	PL	\$ 120	\$ 120	\$ 120	\$ 120	\$ 120
	LM	\$ 20	\$ 20	\$ 21	\$ 21	\$ 21
Total Programmed Funding		\$ 344	\$ 350	\$ 366	\$ 366	\$ 366

TIP ID: CY-MPO-20-03 **County:** Yavapai **Project Name:** Local HURF Exchange Project TBD
Location and Sponsor: CYMPO **Project Type:** Surface Transportation
Description: HURF Exchange Project

		Lanes: 4				
Phase	Funding Source	FY20	FY21	FY22	FY23	FY24
CON	STBG	\$ -	\$ -	\$ -	\$ 250	\$ 125
	LM	\$ -	\$ -	\$ -	\$ 15	\$ 8
Total Programmed Funding		\$ -	\$ -	\$ -	\$ 265	\$ 133

Table 1 - FINAL - April 30, 2019

TIP ID: CY-MPO-20-04 **County:** Yavapai **Project Name:** Mobility Management Activities

Location and Sponsor: CYMPO **Project Type:** Surface Transportation

Description: Mobility Management Activities for CYMPO Region

		Lanes: 4				
Phase	Funding Source	FY20	FY21	FY22	FY23	FY24
PL	5305.d	\$ 55	\$ 54	\$ 54	\$ 54	\$ 54
	LM	\$ 14	\$ 14	\$ 14	\$ 14	\$ 14
Total Programmed Funding		\$ 69	\$ 68	\$ 68	\$ 68	\$ 68

TIP ID: CY-MPO-19-08 **County:** Yavapai **Project Name:** SR 89 Pavement Preservation - HURF Exchange

Location and Sponsor: City of Prescott **Project Type:** Surface Transportation

Description: SR 89 Pavement Preservation

Mile Length: 2.6 Miles

		Lanes: 2				
Phase	Funding Source	FY20	FY21	FY22	FY23	FY24
CON	STBG - CYMPO Payback to ADOT	\$ 80				
Total Programmed Funding		\$ 80	\$0	\$0	\$0	\$0

Table 2 - April 30, 2019

Capital Improvement Projects by Jurisdiction

(FY Funding Amount Listed in 1000's)

TIP ID:	County: Yavapai	Project Name: Chino Valley Pavement Preservation
Location and Sponsor: Town of Chino Valley		Project Type: Local
Description: Pavement preservation for various City Streets		
Mile Length:		
Phase	Funding Source	FY20 FY21 FY22 FY23 FY24
CON	Local	\$ 400 \$ 400 \$ 400 \$ 400 \$ 400
Total Programmed Funding		\$ 400 \$ 400 \$ 400 \$ 400 \$ 400
TIP ID:	County: Yavapai	Project Name: Dewey-Humboldt Pavement Preservation
Location and Sponsor: Town of Dewey-Humboldt		Project Type: Local
Description: Pavement preservation for various City Streets		
Mile Length:		
Phase	Funding Source	FY20 FY21 FY22 FY23 FY24
CON	Local	\$ 235 \$ 235 \$ 235 \$ 235 \$ 235
Total Programmed Funding		\$ 235 \$ 235 \$ 235 \$ 235 \$ 235
TIP ID:	County: Yavapai	Project Name: Prescott - Pavement Preservation Program
Location and Sponsor: City of Prescott		Project Type: Local
Description: Pavement preservation for various City Streets		
Mile Length:		
Phase	Funding Source	FY20 FY21 FY22 FY23 FY24
CON	Local	\$ 8,500 \$ 8,500 \$ 8,500 \$ 8,500 \$ 8,500
Total Programmed Funding		\$ 8,500 \$ 8,500 \$ 8,500 \$ 8,500 \$ 8,500

TOWN OF PRESCOTT VALLEY

Projects

<u>Description</u>	<u>FY 19-20</u>	<u>FY 20-21</u>	<u>FY 21-22</u>	<u>FY 22-23</u>	<u>FY 23-24</u>
Highway 69 Median - Mendecino Signal - ADOT Partnership	\$100,000.00				
Glassford Hill - Free Flow Right - Town/County Partnership	\$550,000.00				
Viewpoint - 2nd Lane at SR89A - Town/County Partnership	\$150,000.00				
Sunset Lane Improvements - Town/County Partnership	\$7,000,000.00				
Viewpoint / Spouse Intersection Improvements	\$4,000,000.00				
Viewpoint Dr Connector (Manley to Roundup)	\$0.00	\$4,500,000.00	\$3,000,000.00		
Robert Rd Widening - Tranquil to Long Mesa	\$0.00	\$0.00	\$500,000.00	\$2,000,000.00	\$2,000,000.00

Regional Road Capital Improvement Plan Summary

12-06-18

PROPOSED 5 YEAR PLAN

	PROPOSED BUDGET					Prior Yr. Costs	Totals
	FY 18/19	2ND YEAR FY 19/20	3RD YEAR FY 20/21	4TH YEAR FY 21/22	5TH YEAR FY 22/23		
Western Yavapai Projects							
CYMPO Studies	\$ 10,000	\$ 10,000	\$ 10,000	\$ 10,000	\$ 10,000	\$ 100,513	\$ 150,513
Public Transportation Funding	\$ 25,000	\$ 15,000	\$ 15,000	\$ 15,000	\$ 15,000	\$ 55,000	\$ 155,000
Access Management Study / Regional Engineering	\$ 80,000					\$ -	\$ 180,000
Williamson V. Rd Safety Improvements (Pioneer Pkwy to Talking Rock Ranch Rd)	\$ 600,000	\$ 600,000	\$ 500,000			\$ 118,206	\$ 3,018,206
Iron Springs Road (Willow Creek Bridge Repair)						\$ 1,568	\$ 501,568
Lindahl Rd/Bagdad Airport Rd./Bagdad Transfer Station Rd Pavement Improvements						\$ 851,410	\$ 906,814
Highway 69 Widening Project (Gateway Mall to Lowes)						\$ -	\$ 75,000
Sunset Ln Overlay/Widening (Prescott East Highway to Pine View Dr)	\$ 3,100,000					\$ 105,574	\$ 3,405,574
Yuma Dr Overlay (Road 3 N to Road 5 N)	\$ 650,000					\$ -	\$ 650,000
Highway 89 Rehab and Improvements (Mill and Fill COP Limits to Yavpe Connector)	\$ 585,000					\$ 19,300	\$ 604,300
Paulden Turn Lanes						\$ 8,747	\$ 72,439
Northern Connector (DCR and ROW Acquisition)						\$ 1,203,388	\$ 1,358,645
SR89/Road 1 North Intersection Improvements						\$ 100,000	\$ 100,000
Fair Oaks Rd Overlay (Williamson Valley Rd to Tonto Rd)						\$ -	\$ 671,201
Bullock Rd Improvements (SR89 to AT&SF RR Easterly R.O.W.)						\$ -	\$ 1,025,000
Old Black Canyon Highway (City of Prescott Limits to Town of PV Limits)						\$ -	\$ 725,000
Drake Cement. LLC Mitigation Projects	\$ 125,000					\$ -	\$ 125,000
Prescott East Highway Overlay/Widening (Sunset to Copper Hill Dr)		\$ 650,000				\$ -	\$ 650,000
Glassford Hill Road and Viewpoint Drive Prescott Valley Partnership		\$ 350,000				\$ -	\$ 350,000
Mint Wash Bridge Improvements (Williamson Valley Road)		\$ 400,000				\$ -	\$ 400,000
Coyote Springs Road Overlay (Antelope Meadows to N Line S1 T15N R1W)		\$ 850,000	\$ 650,000			\$ -	\$ 1,500,000
Ponderosa Park Rd Overlay (SR89 to Indian Creek Rd)		\$ 650,000				\$ -	\$ 650,000
Kirkland Hillside Rd Overlay (Iron Springs Rd to SR96)		\$ 2,100,000	\$ 2,100,000			\$ -	\$ 4,200,000
Old Black Canyon Hwy (Begin Maintenance to Maggie Mine Rd)			\$ 1,200,000			\$ -	\$ 1,200,000
Outer Loop Rd Overlay (Williamson Valley to Road 1 West)		\$ 1,000,000	\$ 1,000,000			\$ -	\$ 2,000,000
Iron Springs Road Chipseal (COP Limits to Kirkland)				\$ 2,000,000		\$ -	\$ 2,000,000
Williamson Valley Rd / Outer Loop Road Intersection Signal Warrant Analysis					\$ 50,000	\$ -	\$ 50,000
Great Western Extension/SR 89A Corridor Study					\$ 1,000,000	\$ -	\$ 1,000,000
Senator Highway Overlay (COP Limits to Oak Knoll)				\$ 1,000,000	\$ 2,100,000	\$ -	\$ 3,100,000
Pavement Management Program	\$ 2,148,000	\$ 953,000	\$ 788,000	\$ 1,248,000	\$ 2,378,000	\$ 5,862,322	\$ 14,777,226
Prior Year Project Costs						\$ 99,589,271	\$ 99,589,271
Total Western Yavapai Projects	\$ 7,323,000	\$ 7,578,000	\$ 6,263,000	\$ 4,273,000	\$ 5,553,000	\$ 108,015,297	\$ 145,190,756

	PROPOSED BUDGET					Prior Yr. Costs	Totals
	FY 18/19	2ND YEAR FY 19/20	3RD YEAR FY 20/21	4TH YEAR FY 21/22	5TH YEAR FY 22/23		
Eastern Yavapai Projects							
Public Transportation Funding	\$ 35,000	\$ 30,000	\$ 30,000	\$ 30,000	\$ 30,000	\$ 399,422	\$ 575,521
Access Management Study / Regional Engineering	\$ 40,000					\$ -	\$ 90,000
Sycamore Canyon Road						\$ 21,723	\$ 772,643
Verde Village Connector (Rainbow Dr. from Peila Ave to Fir St)						\$ 33,748	\$ 343,748
Dry Creek/Boynnton Pass Roads						\$ 151,483	\$ 583,063
Middle Verde Road Paving	\$ 50,000	\$ 350,000				\$ -	\$ 400,000
Crown Ridge Rd Overlay (Ridge Trail Dr to White Tail Dr)						\$ 1,040	\$ 281,959
Camino Real Overlay (City Limits to Arrowhead Ln)						\$ -	\$ 480,000
Page Springs Road Slope Improvements	\$ 150,000					\$ -	\$ 150,000
Eastern Dr Overlay (Navajo Dr to S Mountain View Rd)	\$ 390,000					\$ -	\$ 390,000
Western Dr Overlay (SR260 to W Subdivision Bndy) (MP 0.025 to Bay Cir)	\$ 400,000					\$ -	\$ 400,000
SR260 Wilshire Roundabout	\$ 330,000					\$ -	\$ 660,000
Cornville Road (Rubberized) (Cottonwood City Limits To McGuireville Tl)	\$ 750,000					\$ 7,655,904	\$ 8,405,904
Ogden Ranch Road Paving Cottonwood Partnership (SR260 To Old 279)	\$ 750,000					\$ -	\$ 750,000
SR179 Turn Lane Improvement Partnership (Beaverhead Flat)	\$ 150,000					\$ -	\$ 150,000
Verde Valley School Road Overlay (Adobe Trail to End of Pavement)		\$ 700,000				\$ -	\$ 700,000
Red Rock Loop Rd (MP 4.271 to Sedona City Limits)		\$ 600,000				\$ -	\$ 600,000
Cornville Road (Shoulder Widening Project)			\$ 100,000			\$ -	\$ 100,000
Beaver Creek Rd Montezuma Well (National Park)				\$ 750,000		\$ -	\$ 766,000
Beaverhead Flat/Middle Verde Ext	\$ 615,000	\$ 500,000	\$ 500,000	\$ 1,000,000	\$ 1,000,000	\$ -	\$ 4,115,000
Stagecoach Trl / Arcosanti Rd Traffic Light Partnership					\$ 500,000	\$ -	\$ 500,000
Pavement Management Program	\$ 1,308,545	\$ 1,006,000	\$ 881,500	\$ 1,581,000	\$ 1,236,000	\$ 3,312,424	\$ 10,432,937
Prior Year Project Costs						\$ 41,395,862	\$ 41,395,862
Total Eastern Yavapai Projects	\$ 4,968,545	\$ 3,186,000	\$ 1,511,500	\$ 3,361,000	\$ 2,266,000	\$ 52,971,607	\$ 73,042,637

ALL DISTS Hwy66/Crookton Rd			\$ 1,100,000	\$ 1,100,000	\$ 1,100,000	\$ 2,070,605	\$ 5,370,605
------------------------------------	--	--	--------------	--------------	--------------	--------------	--------------

Major Projects Subtotal	\$ 8,835,000	\$ 8,805,000	\$ 7,205,000	\$ 5,905,000	\$ 5,305,000	\$ 153,882,763	\$ 198,393,835
Pavement Management Program SubTotal	\$ 3,456,545	\$ 1,959,000	\$ 1,669,500	\$ 2,829,000	\$ 3,614,000	\$ 9,174,745	\$ 25,210,163
Admin Subtotal	\$ 397,588	\$ 417,467	\$ 438,341	\$ 460,258	\$ 483,271	\$ 3,653,040	\$ 6,508,615
Expenditure Total	\$ 12,689,133	\$ 11,181,467	\$ 9,312,841	\$ 9,194,258	\$ 9,402,271	\$ 166,710,549	\$ 229,283,288

REG ROAD SUMMARY	01-07-18	01-07-19	01-07-20	01-07-21	01-07-22	
Beginning Balance	\$ 5,734,353	\$ 2,191,171	\$ 527,951	\$ (138,339)	\$ (262,377)	
Total Expenditures	\$ (12,689,133)	\$ (11,181,467)	\$ (9,312,841)	\$ (9,194,258)	\$ (9,402,271)	
Revised Sales Tax (40% in 7/2011)	\$ 7,836,691	\$ 8,228,525	\$ 8,639,951	\$ 9,071,949	\$ 9,525,546	
Impact Fees (Revised Estimate)	\$ 1,237,581	\$ 1,262,332				
Miscellaneous	\$ -	\$ -	\$ -	\$ -	\$ -	
Interest Earned(Paid)	\$ 71,679	\$ 27,390	\$ 6,599	\$ (1,729)	\$ (3,280)	
Ending Balance	\$ 2,191,171	\$ 527,951	\$ (138,339)	\$ (262,377)	\$ (142,381)	New \$3,400 Fee Sept 2007

CUMULATIVE TOTAL					
WESTERN YAVAPAI TOTALS	\$ 121,523,756	\$ 129,101,756	\$ 135,364,756	\$ 139,637,756	\$ 145,190,756
EASTERN YAVAPAI TOTALS	\$ 62,218,137	\$ 65,404,137	\$ 66,915,637	\$ 70,276,637	\$ 72,542,637
COUNTYWIDE TOTALS	\$ 183,741,893	\$ 194,505,893	\$ 202,280,393	\$ 209,914,393	\$ 217,733,393
CUMULATIVE PERCENTAGE					
WESTERN YAVAPAI % TOTALS	66.1%	66.4%	66.9%	66.5%	66.7%
EASTERN YAVAPAI % TOTALS	33.9%	33.6%	33.1%	33.5%	33.3%

Pavement Management Program = Arterial and Major Collector (Regional Roads) Reconstruction & Overlays	
Black Text = In existing 5 year plan no change	
Blue Text = New project funding added to 5 year plan	
Green Text = In existing 5 year plan. Project timeline moved or cost estimate revised	

Pavement Management Program Breakdown (Western)

12-06-18

PROPOSED 5 YEAR PLAN				
PROPOSED FY 18/19	2ND YEAR FY 19/20	3RD YEAR FY 20/21	4TH YEAR FY 21/22	5TH YEAR FY 22/23

Pavement Management Program Breakdown (Western)

Pavement Reconstruction Projects

<i>Full Depth Reclamation</i>					
Holiday Dr (SR69 to Valentine Dr)	\$ -				
Old Hwy 89 (SR89 to T.O.C. Limits) (T.O.C. Limits to Rimrock Rd)	\$ 450,000	\$ 330,000			
Reconstruction Projects Total	\$ 450,000	\$ 330,000	\$ -	\$ -	\$ -

Pavement Rehabilitation Projects

<i>Overlay</i>					
Yuma Dr (Road 3N to Road 4N)					
Clubhouse Dr (SR89 to Hemlock Ave)	\$ 180,000				
Pheasant Pl (Yuma Dr to Cherokee Dr)	\$ 350,000				
Diamond Drive (SR69 to Amber Rd)	\$ 150,000				
Road 5 North (Yuma Dr to Reed Rd)			\$ 320,000		
Lindahl Road (Bagdad Airport Road to End of Pavement)				\$ 600,000	
Robinson Drive (Canyon Drive East to Skyview Dr)				\$ 250,000	
Road 4 North (Reed Rd to SW Corner Lot 17)					\$ 330,000
Road 4 1/2 North (Reed Rd to Sunset Dr)					\$ 150,000
Overlay Projects					\$ 800,000
<i>Mill and Fill</i>					
Pioneer Parkway (Willow Creek Rd to End Maintenance SR89A)					
Rehabilitation Projects Total	\$ 680,000	\$ -	\$ 320,000	\$ 850,000	\$ 1,280,000

Pavement Preservation Projects

<i>Crack Seal</i>					
Crack Fill Roads	\$ 50,000	\$ 50,000	\$ 50,000	\$ 50,000	\$ 50,000
<i>Fog Seal/Rejuvenator</i>					
Williamson Valley Road (COP Limits to End of 4 Lane Section)					
Fog Seal Roads					\$ 100,000
<i>Chip Seal</i>					
Date Creek Rd (ADOT Maintenance to End of Pavement)					
Senator Highway (C.O.P. Maintenance to School House Gulch Rd)	\$ 170,000				
Senator Highway (School House Gulch Rd to End of Pavement)	\$ 200,000				
Williamson Valley Road (Talking Rock to End of Pavement)		\$ 425,000			
Road 3 North (Reed Rd to Yuma Dr)			\$ 70,000		
Ramada Dr (SR 69 to William Dr)			\$ 50,000		
Fort Rock Rd (Old Hwy 66 to Shadow Mountain Pkwy)			\$ 150,000		
Chip Seal Roads				\$ 200,000	\$ 800,000
<i>Scrub Seal</i>					
Scrub Seal Roads					
<i>Microsurface</i>					
Pioneer Parkway Rd Slurry Seal (Williamson Valley Rd to Commerce Dr)	\$ 350,000				
<i>Cape Seal</i>					
Preservation Projects Total	\$ 770,000	\$ 475,000	\$ 320,000	\$ 250,000	\$ 950,000

Annual Costs

<i>Asset Management - Pavement</i>					
Software Purchase/Installation/Implementation					
Mobile Pavement Condition Data Collection	\$ 100,000				
Annual Licensing, Technical Support and Maintenance	\$ 28,000	\$ 28,000	\$ 28,000	\$ 28,000	\$ 28,000
<i>Regional Road Maintenance</i>					
Medians/Brush Maintenance/Mowing	\$ 20,000	\$ 20,000	\$ 20,000	\$ 20,000	\$ 20,000
Guardrail Maintenance	\$ 100,000	\$ 100,000	\$ 100,000	\$ 100,000	\$ 100,000
Annual Costs Total	\$ 248,000	\$ 148,000	\$ 148,000	\$ 148,000	\$ 148,000
Pavement Management Program Total (Western)	\$ 2,148,000	\$ 953,000	\$ 788,000	\$ 1,248,000	\$ 2,378,000

Pavement Management Program Breakdown (Eastern)

12-06-18

PROPOSED 5 YEAR PLAN				
PROPOSED	2ND YEAR	3RD YEAR	4TH YEAR	5TH YEAR
FY 18/19	FY 19/20	FY 20/21	FY 21/22	FY 22/23

Pavement Management Program Breakdown (Eastern)

Pavement Reconstruction Projects

Full Depth Reclamation					
Reconstruction Projects Total	\$ -	\$ -	\$ -	\$ -	\$ -

Pavement Rehabilitation Projects

Overlay					
Quail Run Dr (Rolling Ridge Dr to Mesa Verde Rd)					
Montezuma Lake Rd (Beaver Creek Rd to Bridge)					
Cactus Wren (Stagecoach Tr to Cordes Lakes Dr)					
Del Rio Dr (SR260 to Navajo Dr)					
Spring Ln (SR69 to Lakeview Dr)	\$ 290,000				
Chavez Ranch Rd (Red Rock Loop Rd to Cathedral Vista Dr)	\$ 200,000				
Wild Horse Mesa (SR179 to Subdivision Bndry)	\$ 170,000				
Monte Tesoro Dr (S Subdivision Bndry to Mesquite Dr)	\$ 125,000				
Peila Ave (Camino Real to Paradise)	\$ 200,000				
Rio Mesa Trail (Quail Run to City of Cottonwood Limits)		\$ 525,000			
Del Rio Dr (Western Maintenance to SR260)		\$ 125,000			
Manzanita Trail (Turquoise Circle to Prescott Country Club Drive)			\$ 500,000		
Top O The Morning Dr (Beaver Creek Road to Rusty Spurs Road)				\$ 220,000	
Loy St (Lynn Drive to South Aspaas Road)				\$ 160,000	
Lynn Dr (South Aspaas Road to Loy Street)				\$ 40,000	
South Aspaas (Lynn Drive to the North Boundary of Oak Bend Sub)				\$ 110,000	
Overlay Projects					\$ 650,000
Mill and Fill					
Rehabilitation Projects Subtotal	\$ 985,000	\$ 650,000	\$ 500,000	\$ 530,000	\$ 650,000

Pavement Preservation Projects

Crack Seal					
Crack Seal Roads	\$ 50,000	\$ 50,000	\$ 50,000	\$ 50,000	\$ 50,000
Fog Seal/Rejuvenator					
Loy Rd (Cornville Rd to Hillert Dr)	\$ 18,810				
Page Springs Rd (SR89A to Purple Sage)	\$ 48,735				
Beaver Creek Rd (McGuireville T.I. I17 to Montezuma Well Rd)					
Jacks Canyon Rd (Lee Mountain Rd to Grey Fox Rd)		\$ 40,000			
Quail Run Dr (Rolling Ridge Dr to Mesa Verde Rd)			\$ 6,000		
Montezuma Lake Rd (Beaver Creek Rd to Bridge)			\$ 5,000		
Cactus Wren (Stagecoach Tr to Cordes Lakes Dr)			\$ 5,000		
Del Rio Dr (SR260 to Navajo Dr)			\$ 7,500		
Zalesky Rd (SR89A to E Line Secs 1 & 12)			\$ 7,000		
Rocking Chair Ranch Rd (Martin Way to City of Cottonwood Limits)			\$ 6,000		
Bell Rock Blvd (Verde Valley School Road to Deer Pass)			\$ 4,000		
Fog Seal Roads				\$ 50,000	\$ 50,000
Chip Seal					
Red Rock Loop Rd (SR89A to Sedona City Limits)					
Stagecoach Trl (Cattleguard to End of Pavement)	\$ 70,000				
Jacks Canyon Rd (SR 179 to Lee Mountain Rd)		\$ 80,000			
Bell Rock Blvd (Verde Valley School Road to SR 179)		\$ 100,000			
Loy Rd (Cornville Rd to Hillert Dr)			\$ 75,000		
Tissaw Rd (Cornville Rd to Thede Ln)			\$ 130,000		
Beaver Creek Road (I-17 ROW to End of Pavement)				\$ 350,000	
Verde Valley School Road (SR179 to End of Pavement)				\$ 275,000	
Montezuma Lake Rd (Beaver Creek Rd to Montezuma Ave)				\$ 40,000	
Chip Seal Roads				\$ 200,000	\$ 400,000
Scrub Seal					
Microsurface					
Cape Seal					
Preservation Projects Subtotal	\$ 187,545	\$ 270,000	\$ 295,500	\$ 965,000	\$ 500,000

Annual Costs

Asset Management - Pavement					
Software Purchase/Installation/Implementation					
Mobile Pavement Condition Data Collection	\$ 50,000				
Annual Licensing, Technical Support and Maintenance	\$ 16,000	\$ 16,000	\$ 16,000	\$ 16,000	\$ 16,000
Regional Road Maintenance					
Median/Brush Maintenance/Mowing	\$ 20,000	\$ 20,000	\$ 20,000	\$ 20,000	\$ 20,000
Guardrail Maintenance	\$ 50,000	\$ 50,000	\$ 50,000	\$ 50,000	\$ 50,000
Annual Costs Total	\$ 136,000	\$ 86,000	\$ 86,000	\$ 86,000	\$ 86,000

Pavement Management Program Total (Eastern)

	\$ 1,308,545	\$ 1,006,000	\$ 881,500	\$ 1,581,000	\$ 1,236,000
--	--------------	--------------	------------	--------------	--------------

Central Yavapai Metropolitan Planning Organization 2020 - 2024 MTIP

Transit Projects (FY Funding Amount listed in 1,000's)

TIP ID: CY-YYV-19-TR1		County: Yavapai	Project Name: Yavapai Regional Transit - ADMINISTRATION				
Location and Sponsor: Yavapai Regional Transit			Project Type: Administration				
Description: Administration							
Mile Length: na							
Phase	Funding Source		FY20	FY21	FY22	FY23	FY24
Administration	5311		\$ 182	\$ -	\$ -	\$ -	\$ -
Local Match	LM		\$ 45	\$ -	\$ -	\$ -	\$ -
Total Programmed Funding			\$ 227	\$ -	\$ -	\$ -	\$ -
TIP ID: CY-YYV-19-TR2		County: Yavapai	Project Name: Yavapai Regional Transit - OPERATING				
Location and Sponsor: Yavapai Regional Transit			Project Type: Operating				
Description: Operations							
Mile Length: na							
Phase	Funding Source		FY20	FY21	FY22	FY23	FY24
Administration	5311		\$ 371	\$ -	\$ -	\$ -	\$ -
Local Match	LM		\$ 92	\$ -	\$ -	\$ -	\$ -
Total Programmed Funding			\$ 463	\$ -	\$ -	\$ -	\$ -
TIP ID: CY-YYV-19-TR3		County: Yavapai	Project Name: Yavapai Regional Transit - CAPITAL				
Location and Sponsor: Yavapai Regional Transit			Project Type: Capital				
Description: Capital							
Mile Length: na							
Phase	Funding Source		FY20	FY21	FY22	FY23	FY24
Administration	5311		\$ 90	\$ -	\$ -	\$ -	\$ -
Local Match	LM		\$ 23	\$ -	\$ -	\$ -	\$ -
Total Programmed Funding			\$ 113	\$ -	\$ -	\$ -	\$ -

Central Yavapai Metropolitan Planning Organization 2020 - 2024 MTIP

Transit Projects (FY Funding Amount listed in 1,000's)

TIP ID: CY-YYV-19-TR4		County: Yavapai	Project Name: CYMPO Mobility Management				
Location and Sponsor: CYMPO			Project Type: Mobility Management				
Description: Mobility Management Funds							
Mile Length: na							
Phase	Funding Source		FY20	FY21	FY22	FY23	FY24
Administration	5310		\$ 90.0	\$ 90.0	\$ 90.0	\$ 90.0	\$ 90.0
Local Match	LM		\$ 23.0	\$ 23.0	\$ 23.0	\$ 23.0	\$ 23.0
Total Programmed Funding			\$ 113	\$ 113	\$ 113	\$ 113	\$ 113

TIP ID: CY-YYV-19-TR5		County: Yavapai	Project Name: Central Yavapai Transit Foundation Travel Training				
Location and Sponsor: CYMPO			Project Type: Mobility Management				
Description: Mobility Management Funds							
Mile Length: na							
Phase	Funding Source		FY20	FY21	FY22	FY23	FY24
Administration	5310		\$ 14				
Local Match	LM		\$ 3				
Total Programmed Funding			\$ 17				

TIP ID: CY-YYV-19-TR6		County: Yavapai	Project Name: NAZCARE, Inc. Capital (Vehicle)				
Location and Sponsor: CYMPO			Project Type: Mobility Management				
Description: Mobility Management Funds							
Mile Length: na							
Phase	Funding Source		FY20	FY21	FY22	FY23	FY24
Administration	5310		\$ 25				
Local Match	LM		\$ 7				
Total Programmed Funding			\$ 32				

Central Yavapai Metropolitan Planning Organization 2020 - 2024 MTIP

Transit Projects (FY Funding Amount listed in 1,000's)

TIP ID: CY-YYV-19-TR7		County: Yavapai	Project Name: <i>New Horizons Disability Capital (Vehicle)</i>			
Location and Sponsor: CYMPO			Project Type: Mobility Management			
Description: <i>Mobility Management Funds</i>						
Mile Length: <i>na</i>						
Phase	Funding Source		FY20	FY21	FY22	FY23
Administration	5310		\$ 21			
Local Match	LM		\$ 6			
Total Programmed Funding			\$ 27			

TIP ID: CY-YYV-19-TR8		County: Yavapai	Project Name: <i>New Horizons Disability Operating</i>			
Location and Sponsor: CYMPO			Project Type: Mobility Management			
Description: <i>Mobility Management Funds</i>						
Mile Length: <i>na</i>						
Phase	Funding Source		FY20	FY21	FY22	FY23
Administration	5310		\$ 120			
Local Match	LM		\$ 120			
Total Programmed Funding			\$ 240			

TIP ID: CY-YYV-19-TR9		County: Yavapai	Project Name: <i>New Horizons Disability One Call Center</i>			
Location and Sponsor: CYMPO			Project Type: Mobility Management			
Description: <i>Mobility Management Funds</i>						
Mile Length: <i>na</i>						
Phase	Funding Source		FY20	FY21	FY22	FY23
Administration	5310		\$ 60			
Local Match	LM		\$ 15			
Total Programmed Funding			\$ 75			

Central Yavapai Metropolitan Planning Organization 2020 - 2024 MTIP

Transit Projects (FY Funding Amount listed in 1,000's)

TIP ID: CY-YYV-19-TR10		County: Yavapai	Project Name: New New Hoizons Disability Capital (PM)			
Location and Sponsor: CYMPO			Project Type: Mobility Management			
Description: Mobility Management Funds						
Mile Length: na						
Phase	Funding Source		FY20	FY21	FY22	FY23
Administration	5310		\$ 20			
Local Match	LM		\$ 5			
Total Programmed Funding			\$ 25			

TIP ID: CY-YYV-19-TR11		County: Yavapai	Project Name: New Horizons Disability Capital			
Location and Sponsor: CYMPO			Project Type: Mobility Management			
Description: Mobility Management Funds						
Mile Length: na						
Phase	Funding Source		FY20	FY21	FY22	FY23
Administration	5310		\$ 18			
Local Match	LM		\$ 5			
Total Programmed Funding			\$ 23			

TIP ID: CY-YYV-19-TR12		County: Yavapai	Project Name: Northern Arizona University Operating			
Location and Sponsor: CYMPO			Project Type: Mobility Management			
Description: Mobility Management Funds						
Mile Length: na						
Phase	Funding Source		FY20	FY21	FY22	FY23
Administration	5310		\$ 25			
Local Match	LM		\$ 25			
Total Programmed Funding			\$ 50			

Central Yavapai Metropolitan Planning Organization 2020 - 2024 MTIP

Transit Projects (FY Funding Amount listed in 1,000's)

TIP ID: CY-YYV-19-TR13		County: Yavapai	Project Name: People Who Care Operating			
Location and Sponsor: CYMPO			Project Type: Mobility Management			
Description: Mobility Management Funds						
Mile Length: na						
Phase	Funding Source		FY20	FY21	FY22	FY23
Administration	5310		\$ 60			
Local Match	LM		\$ 60			
Total Programmed Funding			\$ 120			

TIP ID: CY-YYV-19-TR14		County: Yavapai	Project Name: West Yavapai Guidance Clinic Capital (Vehicle)			
Location and Sponsor: CYMPO			Project Type: Mobility Management			
Description: Mobility Management Funds						
Mile Length: na						
Phase	Funding Source		FY20	FY21	FY22	FY23
Administration	5310		\$ 20			
Local Match	LM		\$ 5			
Total Programmed Funding			\$ 25			

TIP ID: CY-YYV-19-TR15		County: Yavapai	Project Name: West Yavapai Guidance Clinic Capital Vehicle			
Location and Sponsor: CYMPO			Project Type: Mobility Management			
Description: Mobility Management Funds						
Mile Length: na						
Phase	Funding Source		FY20	FY21	FY22	FY23
Administration	5310		\$ 20			
Local Match	LM		\$ 5			
Total Programmed Funding			\$ 25			

Table 4 -April 30, 2019

Central Yavapai Metropolitan Planning Organization 2020 - 2024 MTIP

CYMPO Surface Transportation Program Funding				
Obligated and Programmed STBG Projects				
PROJECT	YEAR	STPBG FUNDING	DESCRIPTION	STATUS
SR 69/SR 89 Intersection	FY 03	\$510,000	Construction	Completed
SR 89/SR 89A TI Bridge	FY 04	\$510,000	Construction	Completed
SR 89/SR 89A TI Bridge	FY 05	\$510,000	Construction	Completed
SR 89A Viewpoint TI Bridge	FY 06	\$688,700	Design	Completed
SR 89A Viewpoint TI Bridge	FY 07	\$688,700	Design	Completed
Viewpoint TI/SR 89A Spur	FY 08	\$688,700	Construction	Completed
Viewpoint TI/SR 89A Spur	FY 09	\$688,700	Construction	Completed
Pioneer Parkway	FY 10	\$633,000	Construction	Completed
Pioneer Parkway	FY 11	\$633,000	Construction	Completed
SR 89 Deep Well Ranch Rd to South Chino Valley	FY 12	\$633,000	Design/Construction	Completed
SR 89 Deep Well Ranch Rd to South Chino Valley	FY 13	\$633,000	Design/Construction	Completed
Prescott Valley Multi-use path	FY 14	\$85,000	Construction	Completed
SR 89 Deep Well Ranch Rd to South Chino Valley	FY 14	\$650,000	Design/Construction	Completed
SR 89 Deep Well Ranch Rd to South Chino Valley	FY 15	\$650,000	Design/Construction	Completed
SR 69/Main St Traffic Signal	FY 16	\$500,000	Construction	Completed
Perkinsville Road Roundabout	FY 16	\$150,000	Design	Completed
SR 69 Prescott Canyon Dr to Prescott Lakes Pkwy	FY 17	\$650,000	Design \$ from NACOG	Programmed
SR89 Widening SR89A to Deep Well Ranch Road	FY 17	\$650,000	Construction	JPA
SR89 Widening SR89A to Deep Well Ranch Road	FY 18	\$650,000	Construction	JPA
SR 69 Prescott Canyon Dr to Prescott Lakes Pkwy	FY 19	\$650,000	Design Payback NACOG	Programmed

Table 5 - April 30, 2019

Central Yavapai Metropolitan Planning Organization 2020 - 2024 MTIP

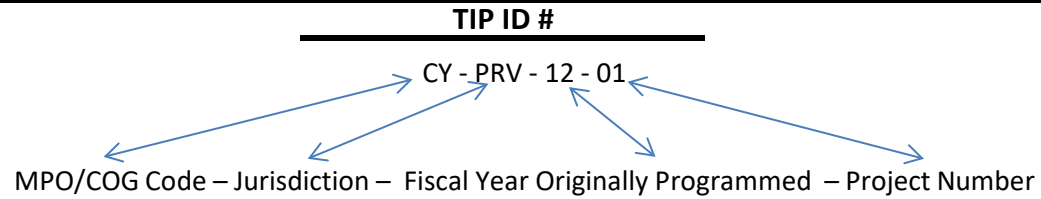
CYMPO Surface Transportation Program Funding		
Potential Future Planning Studies		
PROJECT	CONSTRUCTION COST	ALT ROW COST
SR 89	\$ 25,342,400.00	
Deep Well Ranch Road	\$ 12,400,800.00	\$ 982,080.00
Airport Loop Road	\$ 26,068,400.00	\$ 2,197,325.00
SR 69	\$ 31,761,400.00	\$ 1,552,320.00
SR 169	\$ 16,349,500.00	\$ 4,670,266.00
SR 89A	\$ 27,787,100.00	
SR 89A/Robert Road TI	\$ 32,577,300.00	\$ 797,280.00
Fain Road to SR 169 Connector	\$ -	\$ 11,774,400.00
SR 169 to I-17 Connector	\$ -	\$ 15,536,400.00
Great Western Extension	\$ 15,000,560.00	\$ 2,963,400.00
Chino Valley Extension	\$ -	\$ 15,628,800.00
Northern Connector	\$ 15,864,300.00	\$ 1,665,946.00
Sundog Connector	\$ 22,801,500.00	\$ 1,805,760.00
Glassford Hill Road	\$ 7,956,100.00	\$ 378,048.00
Side Road Connector	\$ 19,734,700.00	\$ 1,562,880.00
Glassford Hill Extension	\$ 17,934,500.00	\$ 1,420,320.00
Old Black Canyon Highway	\$ 7,461,600.00	\$ 400,435.00
Country Club Bypass	\$ 22,618,200.00	\$ 1,906,502.00
Santa Fe Loop Road	\$ 19,068,000.00	\$ 1,510,080.00
Great Western Blvd/Stoneridge Dr	\$ 25,468,400.00	\$ 2,016,960.00
Granite Dells Parkway	\$ 21,934,800.00	\$ 1,737,120.00
Navajo Drive	\$ -	\$ 391,354.00
Lakeshore Drive	\$ 7,367,200.00	\$ 395,366.00
Airport Boulevard	\$ 9,584,000.00	\$ 807,840.00

Table 6



Central Yavapai Metropolitan Planning Organization 2020 - 2024 MTIP

Acronym and TIP ID Key



Jurisdiction Codes

CY	Central Yavapai MPO
CHV	Town of Chino Valley
DEW	Town of Dewey-Humboldt
PRS	City of Prescott
PRV	Town of Prescott Valley
YYV	Yavapai County
YPT	Yavapai Prescott Tribe
DOT	Arizona Department of Transportation
MPO	Central Yavapai MPO Region wide

Funding Codes

LM	Local Match
DM	District Minor
TE	Transportation Enhancement
SRTS	Safe Routes to School
HSIP	Highway Safety Improvement Program
BIA	Bureau of Indian Affairs
STPBG	Surface Transportation Program Block Grant
HURF	Highway User Revenue Fund
OM	Operations and Maintenance
TR	Transit
LP	Local Project
PL	Planning Document